

ARCHITECTURE · INTERIOR DESIGN · LANDSCAPING · M.E.P. SYSTEMS

July / August 2022

SEAB

SOUTHEAST ASIA BUILDING



THE MIXED-USE DEVELOPMENT ISSUE
Transit-Oriented
Development

ON THE COVER: One Excellence / Shenzhen, China

Laminated with
Derprosa™
Antimicrobial

ISSN 2345-7066



9 772345 706008

ConsBuild ASIA

ConsBuild ASIA 2022

2-4 November 2022

BITEC, Bangkok, Thailand

www.consbuild-asia.com

Thailand International Construction and Building Technology Exhibition

Show Highlights

- > Exhibition
- > New Technology
- > Conference & Seminar
- > Business Mathching



For more information, please contact Tel: +66 (0) 94-996-8312 or Email: sales@mbmarketings.com

Organizer Silver Sponsor Supporters



Follow us  [consbuildasia](https://www.facebook.com/consbuildasia)

Luxalon®
Metal Ceilings

Multi-B Open Ceiling System,
Enabling Ventilation and Accessibility,
To CSW Integrated Transport Shelter,
Jakarta, Indonesia

www.hunterdouglas.asia

HunterDouglas 
Architectural

CONTENTS

july-aug 2022

NEWS

- 5 Asia Pacific & Middle East
- 7 World

PROJECTS

- 8 Jewel / Gold Coast
- 12 One Excellence / Shenzhen
- 16 Ocean Terminal Extension / Hong Kong
- 20 Unity One / New Delhi
- 24 Shibuya Scramble Square / Tokyo
- 28 Tianfu New Station TOD Project / Chengdu
- 32 Pudong Financial Plaza / Shanghai
- 36 Wuhan Yangchun Lake Business District / Wuhan
- 42 D-Cube City / Seoul
- 46 Northpoint City / Singapore

INTERVIEWS

- 50 Interview with Melvin Tan, the new President of SIA

TRENDS

- 52 Redesigning the office to attract and retain millennials – An article by dormakaba

MECHANICAL, ELECTRICAL & PLUMBING SYSTEMS

- 54 Industry news

PRODUCT SHOWCASE

- 59 Products that are new or currently in the market

SHOW REVIEW

- 62 Geo Connect Asia 2022

EVENTS

- 75 Guide to tradeshow, conferences and other events relevant to the building and construction industry



On the Cover: One Excellence in Shenzhen, China.
Photographer: Rex Zhou

Cover design by Fawzeeah Yamin

ASSOCIATE PUBLISHER

Eric Ooi (eric.ooi@tradelinkmedia.com.sg)

EDITOR

Amita Natverlal (seab@tradelinkmedia.com.sg)

MARKETING MANAGER

Felix Ooi (felix.ooi@tradelinkmedia.com.sg)

HEAD OF GRAPHIC DEPT/ADVERTISEMENT

CO-ORDINATOR

Fawzeeah Yamin (fawzeeah@tradelinkmedia.com.sg)

CIRCULATION

Yvonne Ooi (yvonne.ooi@tradelinkmedia.com.sg)

Disclaimer

All advertisers and contributors must ensure all promotional material and editorial information submitted for all our publications, must be free from any infringement on patent rights and copyrights laws in every jurisdiction. Failure of which, they must be fully liable and accountable for all legal consequences (if any) that may arise.

The Editor reserves the right to omit, amend or alter any press release submitted for publication. The publisher and the editor are unable to accept any liability for errors or omissions that may occur, although every effort has been taken to ensure that all information is correct at the time of going to press. No portion of this publication may be reproduced in whole or part without the written permission of the publisher.

The editorial contents contributed by consultant editor, editor, interviewee and other contributors for this publication, do not, in any way, represent the views of or endorsed by the Publisher or the Management of Trade Link Media Pte Ltd. Thus, the Publisher or Management of Trade Link Media will not be accountable for any legal implications to any party or organisation.

Southeast Asia Building is available free-of-charge to applicants in the building industry who meet the publication's terms of control. For applicants who do not qualify for free subscription, copies will be made available, subject to acceptance by the publisher, for a subscription fee, which varies according to the country of residence in the following manner:

Annual Subscription

Airmail: America/Europe – S\$185, Japan, Australia, New Zealand – S\$185, Middle East – \$185, Asia – S\$155, Malaysia / Brunei – S\$105

Surface mail: Singapore – S\$60

(Incl 7% GST Reg No.: M2-0108708-2)

Printed in Singapore by Fuisland Offset Printing (S) Pte Ltd
MCI (P) 069/08/2021 KDN No: 1560 (1270) – (6)
ISSN 2345-7066 (Print) and ISSN 2345-7074 (E-periodical)

Trade Link Media Pte Ltd also publishes:

- Bathroom + Kitchen Today
- Lighting Today
- Security Solutions Today
- Southeast Asia Construction

SOUTHEAST ASIA BUILDING is published bi-monthly by:

Trade Link Media Pte Ltd, 101 Lorong 23, Geylang,

#06-04, Prosper House, Singapore 388399

Tel: +65 6842-2580 Fax: +65 6842 2581

Editorial e-mail: seab@tradelinkmedia.com.sg

Website: www.tradelinkmedia.com.sg

Co. Reg. no.: 199204277K

Scan QR Code



or visit our website
<http://seab.tradelinkmedia.biz>

Connect with us on social media!



www.facebook.com/southeastasiabuilding



www.twitter.com/SEA_Building



www.instagram.com/southeastasiabuilding

GROUT
WITH SHINING
PERFORMANCE,
COLOURS
WITH STYLE.

700 + MAPECOLOR METALLIC STAR DUST



SCAN HERE TO FIND
OUT MORE ABOUT
KERAPOXY EASY DESIGN

Mapei Far East Pte Ltd
28 Tuas West Road, Singapore 638383
Tel: +65 6862 3488 | Fax: +65 6862 1012/13
Website: www.mapei.com.sg | Email: mapei@mapei.com.sg

   **Mapei Singapore**



NEW

Kerapoxy® Easy Design

The epoxy grout with shining performance: a range of colours that brings out the best from any tile system combined with incredible durability over the years.

- EASY TO APPLY
- NON-ABSORBENT AND EASY TO CLEAN
- RESISTANT TO BACTERIA AND MOULD
- HELPS KEEP THE INTERIORS MORE HEALTHY
- WIDE RANGE OF COLOURS
- SUITABLE FOR GROUTS UP TO 15 mm WIDE

Mapei colours feature across grout ranges and are matched with Mapesil AC sealant.



MAPEI®

ADHESIVES • SEALANTS • CHEMICAL PRODUCTS FOR BUILDING

85
years
1937-2022



Welcome to July/Aug issue!

This is the mixed-use development issue and the theme is on Transit-Oriented Development (TOD). It is a type of urban development designed to bring people, buildings and public space together with easy walking between them and transit service to the rest of the city. The design strategy is growing in many parts of the world. In Asia, this exciting trend is also picking up and architects are already working on many TOD projects. This issue aims to showcase some examples of TOD projects, which have created vibrant and livable communities, which are walkable around transit systems.

Recently, the Singapore Institute of Architects (SIA) named Ar. Melvin Tan, as the President of the 62nd SIA Council. In an interview with SEAB, Melvin tells us more his role and how the Council plans to move forward.

In Trends, Adriana Voegeli, Digital Communication, dormakaba, explains how redesigning the office can attract and retain millennials.

In the PDF copy of SEAB, we have put together a show review of Geo Connect Asia (GCA) 2022. GCA 2022 showcased a wide range of solutions for the geospatial industry such as digital construction, surveying and monitoring equipment, sensors, satellite tracking, drones, robotics and mapping solutions, amongst many others and we bring the stories to you in this issue.

Happy reading!

Amita Natverlal

SEPTEMBER / OCTOBER 2022 ISSUE

The Green Issue: Sustainability in the Built Environment

This issue spotlights how sustainable buildings, infrastructure and cities can contribute to a green built environment and how biophilic design can be integrated into architecture to create a more holistic design. Includes projects, trends and experts' opinion.



 Association of Myanmar Architects	 Bangladesh Green Building Council	 Design Council – Sri Lanka
 Emirates Green Building Council	 Foundation for Futuristic Cities	 Green Building Committee BEI MYANMAR
 Green Building Council Indonesia	 Green Building Council Italia	 Green Building Council Mauritius
 Green Building Council Namibia	 Green Building Council Sri Lanka	 Hong Kong Green Building Council
 Interior Design Confederation of Singapore	 Jordan Green Building Council	 Qatar Green Building Council
 Philippine Green Building Council	 Singapore Green Building Council	 Society of Interior Designers (Singapore)
 The Hong Kong Institute of Architects	 Vietnam Green Building Council	 Green Institute Nepal
 Interior Designers Association of Nepal	 Singapore Institute of Building Limited	 Society of British and International Interior Design

RSK Group expands presence in Australia and New Zealand with strategic acquisition of SJA

Singapore – RSK Group Limited (RSK), a leading integrated environmental, engineering and technical services business, announces the addition of Australian advisory and project delivery services firm SJA to its thriving business portfolio.

The deal marks the second acquisition in six months for rapidly growing RSK Australia, which recently acquired New South Wales-based civil engineering firm Western Project Services.

The acquisition of SJA provides RSK Group with wider access to large construction and infrastructure projects across Australia, and enhanced opportunities to expand in the Asia Pacific region.



The Campbells Cove Redevelopment at The Rocks in Sydney, planned and designed by SJA.

NBS and Global GreenTag sign partnership agreement

Sydney, Australia – NBS Australia and Global GreenTag International (GGTI) have signed a partnership agreement to collaborate and promote the specification of environmentally sustainable materials in construction projects. Climate change is a global issue and the construction industry, as one of the biggest global emitters, has a major role to play.

Architects and specifiers use NBS platforms to make specification decisions on tens of thousands of construction projects each year. Sustainability is arguably the most important topic in architecture today and NBS recognises that the specification content they provide can help make a significant positive difference to the future built environment.

GreenTag is one of the world's most robust, trusted and widely recognised ecolabels. They independently assure that every product is fitness tested and certified under one of two leading certification programs that use world's best scientific methods.



Image Credit: Ricardo Gomez Angel on UpSplash

GreenTag certification provides specifiers with trustworthy information on green products quickly and efficiently.

By integrating GreenTag certifications into the NBS Source and NBS Chorus platforms, NBS and GGTI are making it easier for specifiers to make informed decisions on the products they select, which will help to create a more sustainable built environment. As part of the partnership, NBS and GGTI will work together to provide the industry with educational webinars and insightful content.

LIAS creates three new professional memberships for Horticulturist, Arborist and Playground Safety Inspectors

Singapore – The Landscape Industry Association (Singapore), also known as LIAS, has created three new professional memberships for Horticulturist, Arborist and Playground Safety Inspectors in Singapore.

Historically, LIAS membership has been offered to corporate entities only. In line with its mission to develop and promote professionalism and quality practices in the landscape industry, LIAS sees the need to also set a benchmark for quality among the individual professionals and provide a platform for their upgrading.

Through the new membership offerings, LIAS aims to distinct competent landscape professionals from their peers and to help the individuals stay abreast with the latest knowledge and practices of the industry. The members are expected to undergo training that will help contextualise overseas credentials to local requirements, for example CPSI with CEU units and courses, which include local standards. The offering of individual membership will also achieve synergy in activities related to the improvement of the landscape industry, while reducing efforts duplications with related associations. Collectively, these professionals will be able to lend more voice to LIAS and allow LIAS to represent the landscape industry more comprehensively.



10 Design reveals a harbourfront high-rise design submission in South China

Hong Kong – This competition scheme of a 268 metres super high rise tower is to create a visual beacon in the heart of a coastal tourism city within the Greater Bay Area of China.

The 11,450 square metres waterfront site is part of a leisure and entertainment complex which comprises cultural and entertainment, exhibition, residential, retail and education facilities. It is an anchor project at the designated culture and tourism zone at the city centre and enjoys great proximity to the city's major transportation hubs. Sitting at the convergence of several waterways, it will be embraced by other key developments across the waters and become a focal point of the city.

The submission includes design of a super high-rise tower of office, hotel and serviced apartment sitting on top of a 4-storey podium. Inspired by the local ritual of dragon dance to pray for rain and blessings to the land, the spiraling form of the tower resembles a dragon ascending from the sea, thrusting up to the sky.

Nick Cordingley, Design Partner of 10 Design commented: "The design of the high-rise tower is a natural response to both the surrounding environment and the local culture. The dragon motif is drawn not only for its connotation of auspiciousness and agility, but also from the maritime culture specific to this



Photo credit: Frontop

location and the local communities."

The building is oriented to maximise sea view while exerting minimal impact on the residences behind. Four fillet corners are introduced to optimize sightlines; a subtle reduction of floor area in the middle zone endows an elegant identity to the building; while the shifting aluminum claddings introduce sinuous contours lines on the façade to conclude the design.

Regent Hotels & Resorts elevates the luxury experience with its first resort in Vietnam

Phu Quoc, Vietnam – IHG Hotels & Resorts debuts its first resort under its upper luxury brand, Regent Hotels & Resorts, in Southeast Asia with the opening of Regent Phu Quoc. Located off the southwest coast of Vietnam alongside a UNESCO-designated World Biosphere Reserve,



Photo credit: Regent Phu Quoc

the all-suites-and-villas resort is a stone's throw from the water's edge along Long Beach. Exceptional design and state-of-the-art technology will be delivered alongside the brand's legendary hospitality for a seamless guest journey.

"We are delighted to introduce Regent's renowned hospitality to Vietnam and look forward to welcoming guests to experience the inimitable island jewel that is Phu Quoc," said Juan Losada, General Manager. "Regent Phu Quoc will surely be a brand-defining resort in Vietnam and South East Asia that will deliver a truly captivating interpretation of the Regent experience, marrying the calming, the imaginative and the extravagant."

The Regent brand's luxury legacy has been transformed with today's most seasoned travellers in mind to deliver the serene and sensational at every turn. This is brought to life at Regent Phu Quoc by luxury hospitality design firm BLINK Design Group. Hidden beneath the shade of swaying palm trees, 176 suites and 126 villas echo traditional Vietnamese vernacular and contemporarily designed interiors with a soothing colour palette. Expansive windows and verandas invite natural light in, transforming suites and villas into light, airy private havens complemented by views of landscaped gardens or panoramic ocean scenes.

Google opens Bay View Campus in Bay Area

Mountain View, California, USA – On 17 May 2022, Google announced the opening of its new Bay View campus in Silicon Valley, representing the company's first time developing its own major campus.

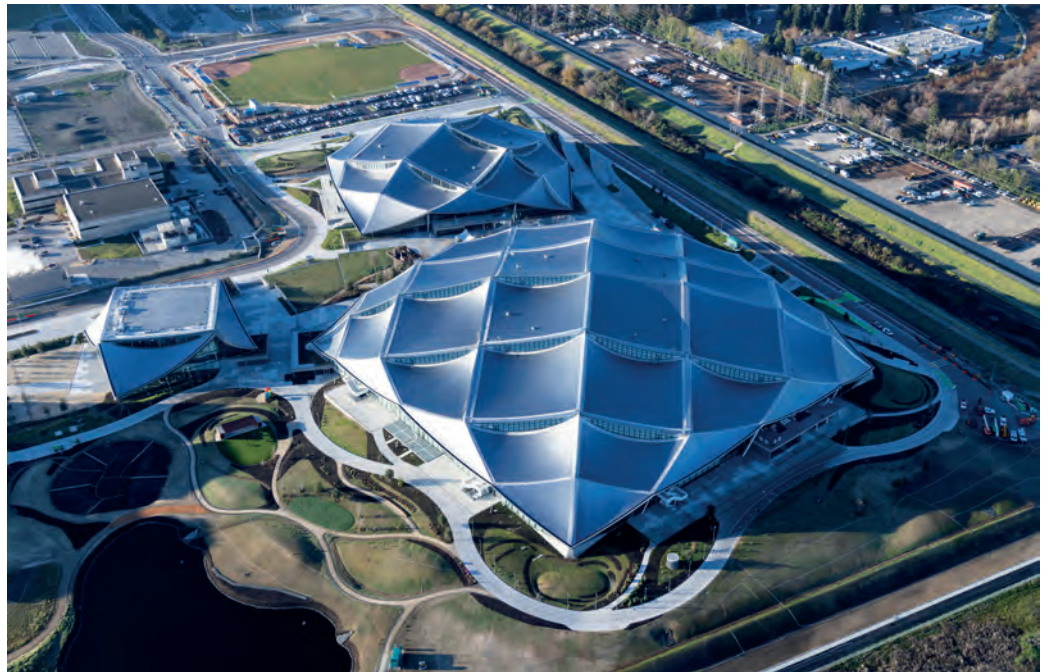
The Bay View campus was designed by architects Bjarke Ingels Group (BIG) and Heatherwick Studio, as well as Google's design and engineering teams, and spans 42 acres adjacent to the NASA's Ames Research Center in Silicon Valley. It totals 1.1 million square feet, with 20 acres of open space, two office buildings, an 1,000-person event center, and 240 short-term employee accommodation units.

"With the opening of Google's new Bay View campus at Moffett Airfield, I applaud them for deepening their commitment to be an active part of California for years to come. This site will house 4,000 Google employees and includes two office buildings, an event center, and temporary hotel units for employees. It will help bolster our region's position as a thriving hub for top talent and innovation, and I welcome these transformational changes," said Congresswoman Anna Eshoo (D-CA).

"As home to Google's global headquarters, we applaud Mountain View's largest employer for its commitment to green building," said Mayor of Mountain View Lucas Ramirez. "Google's new Bay View campus is making an environmental statement through its emphasis on sustainability. The campus also provides our community with enhanced opportunities for active recreation and enjoyment of nature with public access to expanded trails with sweeping San Francisco Bay views, improved bike connections to Stevens Creek and Bay trails, and new bike lanes."

The interior of the buildings reemphasize Google's vision for the future of work, designed in response to its understanding of why Google's employees come to the office, what they need from their teammates, and what they need from the company.

For those coming into the office, it was designed to balance Googlers' desire to come together as teams with the need for an environment that enables deep-focus work. Team spaces are on the upper level and gathering spaces are below, separating focus and collaborative areas while still providing easy access to both. The second floor design has variation in floorplates to give teams a designated "neighborhood" area that is highly flexible to change with their needs.



An aerial photo of Google's Bay View campus shows the wave-like form of the tensile canopy, covered in dragonscale solar panels and complimenting its surrounding landscape. (Photo: Iwan Baan)

Features include:

- The campus incorporates biophilic design principles, including greenery, natural daylight and views outside from every desk to improve the health and wellbeing of those inside the building. Clerestory windows modulate direct light onto desks with automated window shades that open and close over the course of the day.
- The ventilation system uses 100 percent outside air. This means air flows one way, so there is no recycled air, which is much healthier for occupants.
- To remove toxins and create the healthiest environment possible, the project team vetted thousands of building products and materials — everything from carpet tiles, paints, piping, plywood and furniture were evaluated using the Living Building Challenge (LBC) Red List as a framework.
- Nine pieces of artworks from local Bay Area artists are on and around the nine two-storey elevators. Not only do they depict Bay Area ecology scenes, but they also help with wayfinding in the building.

Sustainability is also core to the Bay View campus. The site is expected to achieve a LEED-NC v4 Platinum certification and become the largest facility ever to attain the International Living Future Institute (ILFI) LBC Water Petal Certification.

Local residents can also benefit from the opening of the Bay View campus, including public access to expanded trails with panoramic views of the Bay, improved bike connections to Stevens Creek and Bay trails, and expanded car lanes and new bike lanes with the widening of R.T. Jones Road.



Jewel



/ SYDNEY, AUSTRALIA

A view of the Jewel complex comprising 513 apartments and a 169-room luxury hotel.

Mapei Solutions helped this luxurious residential complex in Gold Coast to obtain a 5 Star Green Rating.

Jewel is a luxury development of three crystalline towers constructed on the internationally renowned Surfers Paradise beachfront, Gold Coast, in Western Australia. It consists of 513 apartments and a 169-room luxury hotel: a first of its kind on the Gold Coast. The design for Jewel was inspired by the crystalline volcanic hook that forms the underlying structure at the coastline and, in particular, the Gold Coast's iconic hinterland. The all encompassing towers boasts luxury resident facilities across all three buildings, including a Michelin Star restaurant, a grand ballroom, and 812 car spaces.

Sustainable products for an award-winning project

The Green Building Council of Australia awarded the Jewel complex with a 5 Star Green Rating for the project's commitment to sustainability. Part of achieving this award included the use of building products with very low emission levels of volatile organic compounds (VOC) such as those supplied by Mapei.

The company's solutions helped complete the installation of porcelain tiles in the public areas, travertine in the apartments, mosaics on the walls in the public amenities, and cobblestone in the outdoor areas. KERAFLEX MAXI S1 deformable cementitious adhesive with extended open time and no vertical slip was chosen to bond porcelain tiles. Tile joints were grouted with KERACOLOR FF cementitious grouts while expansion joints were sealed with MAPESIL AC sealant to colour-match the grout.

Travertine tiles were installed in the luxury apartments on both walls and floors using KERAFLEX MAXI S1 as an adhesive and ULTRACOLOR PLUS as a grout for joints. The same system was chosen for the installation of large-size ceramic tiles in the lobby and podium area.

In the demanding environment of the kitchen, porcelain tiles were installed on the walls with MAPEMASTIC EASY, a paste adhesive manufactured and distributed on the Australian market by Mapei Australia. To ensure durability and utmost hygiene, ceramic tiles were installed on the floors with KERABOND PLUS adhesive mixed with ISOLASTIC latex additive. Joints of both coverings were grouted with KERAPOXY acid-resistant epoxy grout. The above-mentioned adhesive system was also used for bonding mosaic tiles in the spa and sauna, before grouting joints with ULTRACOLOR PLUS.

Outdoor areas were covered with stone installed with KERABOND PLUS + ISOLASTIC before grouting joints with KERACOLOR GG to ensure good compressive and flexural strength, good abrasion resistance, low shrinkage, and excellent cost-performance ratio.

Mapei Products

Installing ceramic tiles and stone materials: Kerabond Plus, Isolastic, Mapemastic Easy*, Keraflex Maxi S1

Grouting joints: Ultracolor Plus, Keracolor FF, Keracolor GG, Kerapoxy, Isolastic

Sealing expansion joints: Mapesil AC, Mapesil LM

*This product has been manufactured and distributed on the Australian market by Mapei Australia

Article Source: Realtà Mapei International 88/2021



PROJECT DETAILS

Project Name: Jewel

Project Location: Gold Coast, Queensland, Australia

Design: Arcadis, DBI Architects

Period of Construction: 2018–2019

Period of Mapei Intervention: 2019

Owner: Yuhu Group

Main Contractor: Tilecorp Pty Ltd

Installation Company: Scribed Flooring

Project Management: Thinc Projects Australia Pty Ltd

Photos: Dyorn Taylor and Mindi Cooke

Mapei Coordinator: Dyorn Taylor, Mapei Australia



Photo 1: Stone was installed in the external areas with KERABOND PLUS + ISOLASTIC, before grouting joints with KERACOLOR GG.

Photo 2: In the lobby and podium areas large-size ceramic tiles were installed with KERAFLEX MAXI S1 and joints were grouted with ULTRACOLOR PLUS.



One Excellence



/ Shenzhen, China

Photographer: Rex Zhou



Photographer: Rex Zhou

L eading urban design and architecture practice Farrells' One Excellence development, in the heart of Shenzhen's new Qianhai district and China's Greater Bay Area, totals 757,000 square metres and sets a global precedent for future mixed use, high-density urbanism – with social and green space at its heart.

Central to the scheme are the multi-level streetscapes, which create lively interplays between different functions to generate vibrant retail spaces. Farrells' design, which interlocks the towers and streetscapes is conceived as an evolution from the imposing shopping malls and isolated

towers that have dominated Shenzhen's urbanism throughout its initial decades of growth. Green spaces, metro links and multi-level circulation routes weave seamlessly into the pedestrian networks that connect the wider Qianhai district.

The project features four office towers, including the 300 metres landmark tower and iconic 180 metres gateway towers and two residential towers, with each offering a high level of demand from buyers and tenants. The 'gateway' towers play an important role in shaping the emerging city, through welcoming visitors and signifying the beginning of the next chapter in Shenzhen's unprecedented growth.

Rich architectural features complement the permeable streetscapes and create a variety of diverse public spaces, with character and purpose.

Rich architectural features complement the permeable streetscapes and create a variety of diverse public spaces, with character and purpose. These include an iconic gateway canopy, residential clubhouse and feature skylights enhancing the urban experience throughout. The design embraces the development's coastal setting with the soft tower forms and fluid cladding sculpted to mimic the flowing movement of water.

"Human experience formed the foundations of this advanced concept of mixed-use, transit-oriented design. We have created a rich and varied network of urban spaces that cultivate a strong sense of place, encourage interaction and an organic flow of pedestrians in the area. This sensitive thinking is balanced with a series of architectural highlights and memorable landmarks, which add to the district's cityscape," said Stefan Krummeck, Director at Farrells.

"Our vision for the development was centred around creating an architectural legacy in Shenzhen that could truly be enjoyed by the community now and for the years to come. Farrells embraced this challenge, optimising space and creating a focal point for the region's residents. Their team pushed technical boundaries and worked closely with the project team in achieving our ambition. We're thrilled to see this development come to life and believe it's people focused designs will lead the way in this emerging area," said Li Zun, Project Manager at Excellence Group.

Farrells won the design competition for One Excellence in late 2013, leading the design process to deliver the project to the highest design standards. Stefan Krummeck and Benjamin Lau are the lead architects for One Excellence.

Farrells is the architect behind Shenzhen's KK100 tower and is currently working on a total of 11 towers within the Qianhai district, inclusive of the One Excellence project. The team is also involved in the design of the new Qianhai Metro which involves 10 new stations within the district.



Photographer: Eric Cheung

PROJECT DETAILS

- Project Name:** One Excellence
- Project Location:** Shenzhen, China
- Client:** Excellence Group
- Architect:** Farrells
- Gross Floor Area:** 757,000 square metres
- Site Area:** 57,481 square metres
- Completion:** 2019



Photographer: Rex Zhou



Photographer: Rex Zhou



Ocean Terminal Extension



/ Harbour City, Hong Kong

Photo Copyright: Nigel Young / Foster + Partners



Photo Copyright: Foster + Partners

A new gateway for thousands of international cruise liner passengers, the extension to the Ocean Terminal in Harbour City, Hong Kong, opened to the public in 2017. With stunning new outdoor spaces for dining and leisure capitalising on the unmatched panoramic views of the harbour, this new expansion has become the best place for visitors to immerse themselves in a unique waterfront experience, creating a new landmark for Hong Kong.

The terminal has the distinct advantage of being located directly opposite Victoria Harbour, boasting unrivalled views of Hong Kong's iconic skyline. Standing right on the water's edge visitors have 270-degree views of the city, from the Kowloon Peninsula in the North East to Causeway Bay in the South East. This new public plaza – in the



Photo Copyright: Nigel Young / Foster + Partners

This new public plaza – in the form of cascading terraces looking out towards the harbour – provides a new outdoor space for the people of Hong Kong and a distinctive gateway to the city for its visitors.



Photo Copyright: John Nye

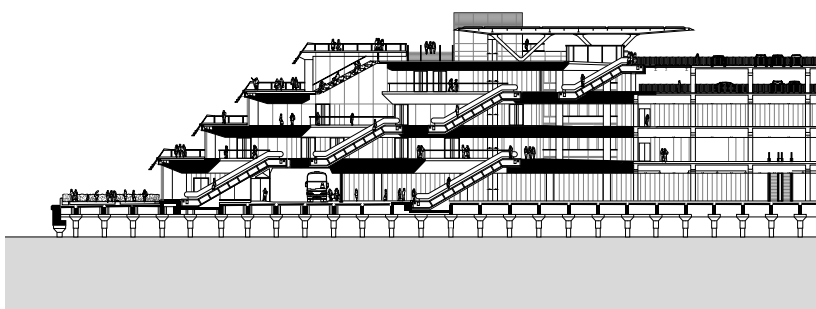
form of cascading terraces looking out towards the harbour – provides a new outdoor space for the people of Hong Kong and a distinctive gateway to the city for its visitors. The building embraces the city's al-fresco dining culture, turning the undeveloped end of the cruise terminal into a vibrant entertainment hub right in the centre of the city harbour.

Luke Fox, Head of Studio and Senior Executive Partner, said: "By introducing a new series of public spaces to the site, right down to the waterfront edge, we aim to create a 'new living room' for the people of Hong Kong and its visitors right in the heart of the city."

Architecturally, the form of the building is a direct response to its climatic context. Its wide cantilevered terraces shade the lower levels, protecting them from the harsh tropical sun. The balustrades, angled to tie in with the overall geometry of the building, extend downwards as louvred shading devices for the terrace below. The building also offers retail, dining and lounge facilities, with a stepped outdoor seating area from which to sit and enjoy the view. The steps feature glass risers that admit natural light deep into the internal atrium. The connection to the existing terminal is seamless, and the design introduces a new central diagonal circulation spine that connects the roof level to the marine deck, both physically and visually, via a series of escalators cascading down through the public spaces.

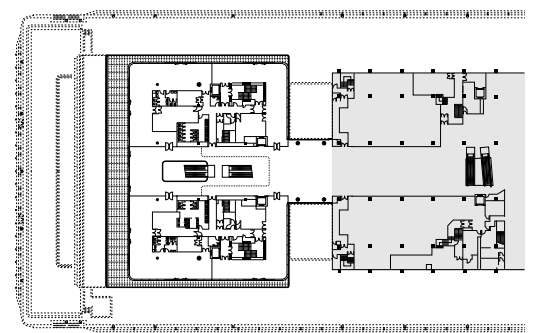
PROJECT DETAILS

- Project Name:** Ocean Terminal Extension
- Project Location:** Harbour City, Hong Kong
- Client:** Harbour City Estates Limited
- Architect:** Foster + Partners
- Collaborating Architect:** Ronald Lu & Partners
- Site Area:** 6,033 square metres
- Area (Gross):** 9,300 square metres
- Green Area:** 1,229 square metres
- Number of Floors:** 5
- Marine Deck level – F+B & Cruise facilities
- Deck 1 to Deck 3 – F+B and retail
- Roof – Garden and event spaces
- Height:** Total of roof is 24.52 metres PD; Overall building height ~20.3 metres
- Length:** 62 metres
- Width:** 57 metres
- Capacity:** 4,162 people
- Construction Start:** 2014
- Completion:** 2017



Long Section
0 20m

Copyright holder: Foster + Partners



Deck Plan - Level 2
N 0 20m


Copyright holder: Foster + Partners



Unity One

 **Cinépolis**

**10000 INDIANS
VOTED FOR DATSUN**
IT'S TIME TO VOTE FOR CHANGE



UNITY NISSAN FOR TEST: 8860605434
FOR INFO CALL: 8860605435

Address: Rajghansh Auto World, A Block
Phase - II, Okhla Industrial Estate
Okhla, New Delhi, India
Phone: 8860605434, 8860605435

BIKANERVALA



/ Rohini, New Delhi, India



Aboutique retail destination, Unity One is a unique typology of space developed in partnership with DMRC. A successful model for a multi-level car parking facility, the building is an interesting mix of activities, encouraging people to use the parking facilities, hence increasing the footfall in the commercial zone for effective financial viability.

The idea of integrating a retail and entertainment destination with a major transportation hub by providing assorted parking facilities has been welcomed by the users. Moreover, the model has successfully been able to create a typology which promotes efficient utilisation of space and resources by punching multiple utilities in one single building, setting a precedent on how an efficient infrastructure system can be a lucrative development model for retail and entertainment.

Key performance attribute (thermal control, acoustics and wind resistance, fire safety)

The first in the country, a Solar Carport has been installed on the rooftop and is connected through the ramp and has significantly helped in utilisation of the space; it has also reduced the solar heat intake of the structure, thereby reducing energy consumption.

Innovative technology used

One of the first malls to be connected via a Metro Station at the concourse level, it is the first building in India to have a Solar Carport on its rooftop.





One of the first malls to be connected via a Metro Station at the concourse level, it is the first building in India to have a Solar Carport on its rooftop.



Specific features provided in the project with respect to protection and enhancement of the environment

The incorporation of the Solar Carport has substantially reduced its dependence on the external power grid, thereby reducing the load on the city. This building, owing to the extensive use of sustainable measures has received the IGBC Platinum rating recently.

Challenges faced in the implementation of the projects

This being a first-time initiative, there were apprehensions related to user comfort and acceptability. No challenge was faced during design and construction. Once open, the apprehensions vanished as the users have taken this initiative in a very positive and appreciative manner.

PROJECT DETAILS

- Project Name:** Unity One Multilevel Carpark & Retail Multiplex Complex
- Project Location:** Rohini, New Delhi, India
- Client:** Unity Buildwell Ltd.
- Architect:** GPM Architects & Planners
- Built-Up Area:** 35,671 square metres / 28,113 square metres (554 ECS) in Basement & 2nd Floor to Terrace Floor
- Start Date:** March 2013
- Completion Date:** January 2017
- Photographer:** Ranjan Sharma Photography

Shibuya Scramble Square



/ Shibuya-ku, Tokyo, Japan

Photo credit: The Shibuya Scramble Square

Shibuya Station, the heart of Tokyo's consumer culture, is Japan's representative transportation hub for nine railway lines bringing 3.3 million passengers in and out every day. Aiming for a safe and pleasant city for all the visitors, in addition to its traffic convenience, Shibuya's central area has been undergoing a major urban redevelopment with numerous projects to improve traffic flows around the station, construct disaster-resistant facilities, attract new industries such as IT, and enhance its global appeal as the cultural capital. Shibuya Scramble Square is the model project of urban redevelopment planning including a station, which stands right above Shibuya Station and consists of high-end offices, large-scale commercial facilities, a co-creation facility, and an observatory. The shape of the district around the station is as complex and inhomogeneous as the chaotic town itself. The project has three distinctive design features reflecting the district's characteristics.

“Urban Core” – Urban space connecting vertical movements

Because of the valley topography peculiar to this area, the arterial roads dividing the town, and relocation and extension / reconstruction repeated by railway companies, Shibuya was fragmented and became a city that is difficult for pedestrians to navigate. In order to solve these problems, the vertical atrium space dubbed as the “Urban Core” was designed to realise smooth longitudinal movements. The Urban Core made its presence known in the city with its unique “dented” tower form. Its façade features rows of louvers spiraling upwards, breaking up its enormous scale to provide a sense of continuity with the surrounding urban landscape.

Drawing eyes to the corners – Design to connect the super high-rise and the city below

In Shibuya, roads and railways radiate out from its centre on the valley floor, making “corners” more visible than “sides”. The tower is designed to draw the eye towards its corners to correspond to the town’s urban landscape.

Each pane of Low-E glass on the façade is over four metres tall. The shape of the panes transforms slightly on the tower's corners, changing the appearance of their reflections. The white ceramic print placed over the glass panes is designed



Photo credit: The Shibuya Scramble Square

to increase its transparency towards the corners to create a visual flow. The flow starting at the lower portion of the building continues upwards to the rooftop observation deck just as the tower rising from the street to the sky.

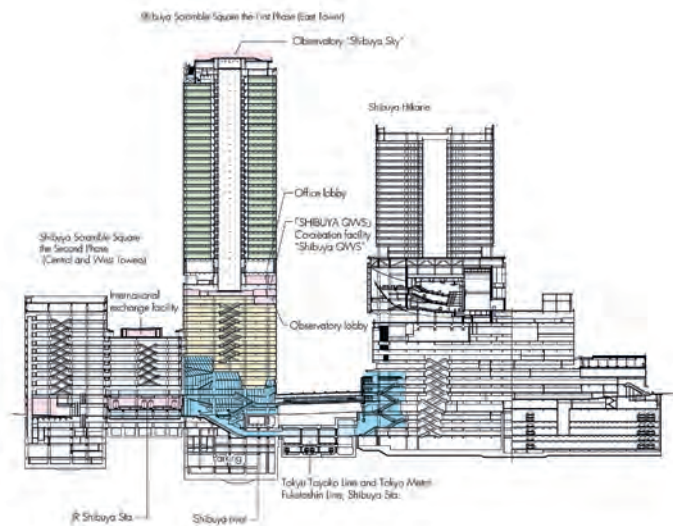
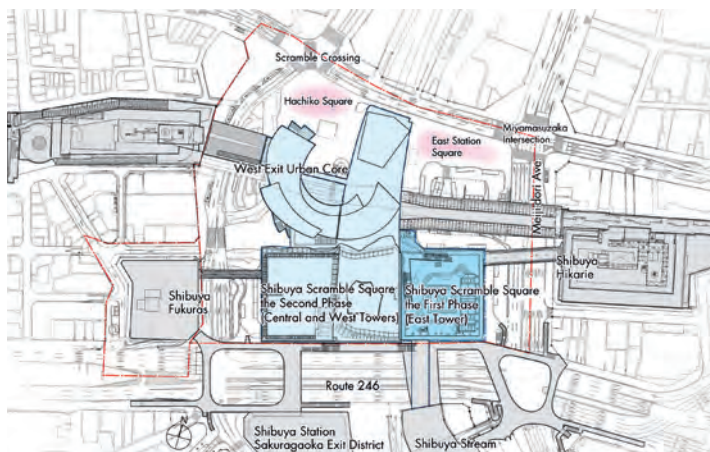




Photo credit: The Shibuya Scramble Square

Shibuya Scramble Square is the model project of urban redevelopment planning including a station, which stands right above Shibuya Station and consists of high-end offices, large-scale commercial facilities, a co-creation facility, and an observatory.

"SHIBUYA SKY" – Observatory for escaping the city while being in it

The 230-metre-tall tower is crowned with the observatory, SHIBUYA SKY, featuring an outstanding panoramic view of Tokyo.

This vast observatory deck is intentionally left empty to free visitors from the hustle and bustle of the city.

The deck's perimeter is surrounded by transparent glass screens to provide the unobstructed 360-degree view and allow visitors to simultaneously feel Tokyo's dynamic energy and a sense of unity with the sky.

As a new floating public space, SHIBUYA SKY connects Shibuya's radiating townscape and rising skyscrapers.

PROJECT DETAILS

Project Name: Shibuya Scramble Square the First Phase (East Tower)

Project Location: Shibuya-ku, Tokyo, Japan

Clients: Tokyu Corporation, East Japan Railway Company, and Tokyo Metro Co., Ltd

Design Architects: Nikken Sekkei, Kengo Kuma and Associates

Design and Supervision: Shibuya Station District Development Project Consortium (Nikken Sekkei + Tokyu Architects & Engineers + JR-East Design Corporation + Metro Development)

Site Area: Approximately 15,300 square metres (including the Second Phase for Central and West Towers)

Total Floor Area: Approximately 181,000 square metres

Floors: 7 basement storeys, 47 storeys above ground

Building Height: Approximately 230 metres

Construction Period: June 2014 – August 2019 (63 months)

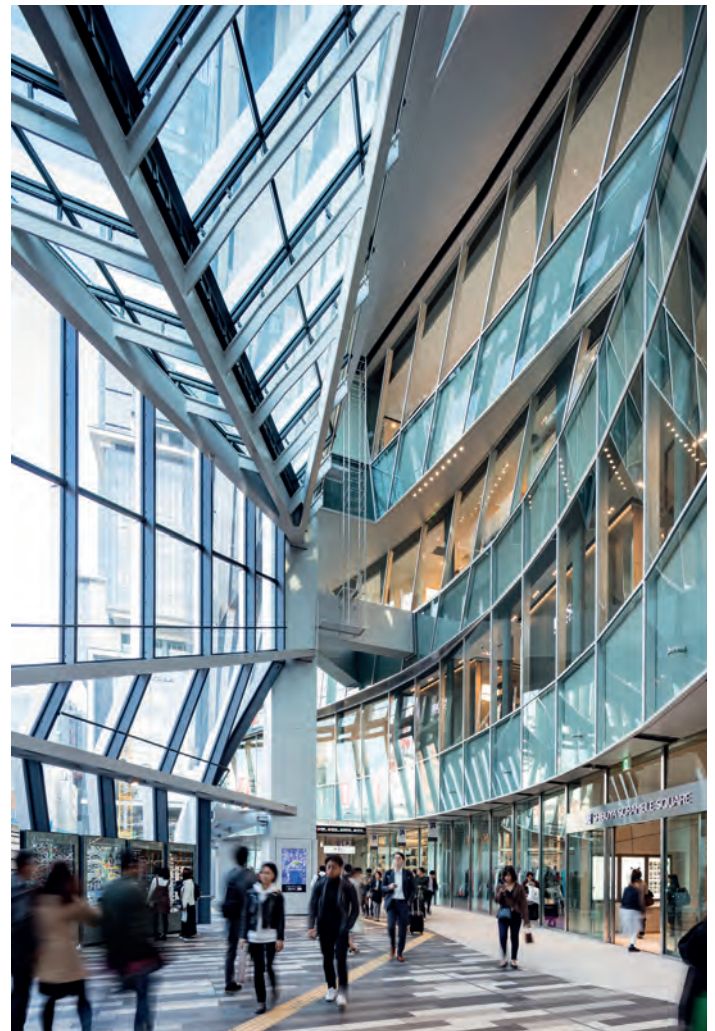


Photo credit: The Shibuya Scramble Square



Chengdu Tianfu New Station



/ Chengdu, China



An urban hub

Aedas recently won the design competition for the 'Tianfu New Station TOD Project'. The winning scheme was designed in collaboration with China Southwest Architecture Design & Research Institute, China Railway Eryuan Engineering Group Co Ltd.

Standing in the core of Southwest China, Chengdu plays a vital role in driving development in the region. Tianfu New Station TOD project plays an essential part in executing this plan by shortening inter-city travel time to reinforce connection within city clusters.

The project is located on the East side of the Chengdu Tianfu New District with the airport and railway station situated 40-minutes from the site. An extensive premium park is situated adjacent to the project, allowing residents and users to revel in the panoramic view of the Longquan Mountain scenery. Distinguished by the design's seamless integration to transportation, the project makes full use of its surrounding landscape to establish a landmark gateway to the city.

Encompassing a transit-oriented development (TOD) design, the development emphasises the transportation hub as the central point with retail, office and residential space designed around it. Centering the design around the city's transportation system allows the high-speed rail station to be seamlessly integrated into the city. It also provides efficient connecting and transferring points to cultivate a humane and sustainable urban space with a convenient air-ground-underground transportation system.

Optimising the urban hub

The design is structured to prioritise the surrounding green landscape while integrating into the city to form a highly coordinated multifunctional urban hub.

Blurring the boundaries between architecture and nature, the glass panel roof maximises sunlight and reflects the outdoor

greenery to create the station hall into a "Light Valley". A park, elevated pedestrian walkway and green space are designed in the project's core to cultivate a natural environment.

An integrated three-dimensional station

Natural light is integrated into the middle of the high-speed rail platform. The "Light Valley" sits between the platforms so passengers are guided by the light in the station halls when entering platforms on the higher levels.

The high-speed rail station connects the North and South of the city with multilevel retail space and raised pedestrian walkways. Pedestrians are led by greenery to each part of the development. The design allows citizens to utilise the space and promotes a healthy lifestyle.

The core of the hub for efficient transfers

Within the scope of TOD integration, the original train line and station has been optimised to cover the surrounding area to



Commercial connectivity between the North and South.

Tianfu New Station TOD project plays an essential part in executing this plan by shortening inter-city travel time to reinforce connection within city clusters.

improve social and economic activity. The station area has also been greatly enhanced, and an integrated public transportation system establishes seamless inter-regional accessibility and convenience.

The North and South sides of the station encompass independent traffic systems that allow easy access to the hub for passengers from all part of the city. This will make it easy to enter and exit without traffic congestion and shorten the distance to enhance the travel experience.

Landmark gateway to Chengdu

The design is inspired by the Chinese mythic Phoenix. Illustrating the arrival of new opportunities and optimism, the new high-speed rail station resembles the arriving Phoenix resting on a tree, which is resembled through the green space and railway parks.

The North-South axis of the high-speed rail station is the highest point of the design. The East and West side of the

design recede to mirror the two wings of a phoenix. The main entrance encompasses a spherical curtain wall that resembles the eye of the Phoenix. A curved glass curtain wall cultivates movement and a sense of lightness.

PROJECT DETAILS

Project Name: Tianfu New Station TOD Project

Project Location: Chengdu, China

Client: Chengdu Railway Urban Development Group Co.

Design & Project Architect: Joint Venture of Aedas, China Southwest Architecture Design & Research Institute Co., China Railway Eryuan Engineering Group Co Ltd.

Gross Floor Area: 3.348 million square metres

TOD Integrated Design Site Area: 272 hectares

Project Status: Ongoing

Renderings: Aedas



Station main hall.



Pudong Financial Plaza



/ Shanghai, China



Pudong Financial Plaza (PFP) is a mixed-use development that creates a civic and social nexus, retail centre, and tourist destination in Shanghai's burgeoning Pudong district. Located in the centre of Lujiazui – one of the fastest growing financial districts in China – the pedestrian-focused, transit-centered development establishes an essential link between the region's many tourist destinations, residential buildings, and commuter hubs.

PFP is sited between Pudong's financial and civic centres and bounded by Century Avenue, the district's most important thoroughfare. The development consists of three office towers, an 11-storey shopping centre, a multimodal transit hub, and a below-grade retail concourse. Buildings and vehicular access roads are strategically placed along the site's perimeter to create a multilevel urban room at the heart of the plaza. The result is a casual, pedestrian-only gathering space where people can connect as they go about their daily routines.

The development illustrates how transit-oriented projects can help sustain large retail centres. The development forms connections to neighbouring subway lines and bus routes, and introduces new, intermodal transit terminals in response to the district's need for a centralized arrival, departure, and transfer point. It also improves the daily life of transit riders by bringing people through a new concourse, spanning

PROJECT DETAILS

Project Name: Pudong Financial Plaza

Project Location: Shanghai, China

Client: Shanghai Lujiazui Finance & Trade Zone Development Co., Ltd.

Architect: Skidmore, Owings & Merrill

Building Height: 193.50 metres

Number of storeys: 38

Building Gross Area: 463,000 square metres

Completion: 2017

Photo Copyright: © Arch Exist



Buildings and vehicular access roads are strategically placed along the site's perimeter to create a multilevel urban room at the heart of the plaza.

a full block and animated with a diverse array of retail offerings. The transit access points connect directly to the retail centre entrances.

In addition to improving access to transit, PFP reduces the district's carbon footprint by decreasing car use and traffic. It also aids in diminishing urban sprawl, improving air quality, and increasing foot traffic to nearby businesses. With a carefully crafted network of pedestrian-scaled spaces, the development creates an accessible and dynamic environment for both connection and respite.





Wuhan Yangchun Lake Business



The 1,800 hectare district includes 368 hectares of public open space that provides diverse recreational amenities and a host of ecological benefits.

District

/ Wuhan, China



Existing conditions on the site include the high-speed rail station, significant roadway infrastructure, channelized canals, and a solid waste landfill.

Wuhan's strategic location on the banks of the Yangtze River in central China has led to its sustained success as a trade hub for centuries. Heralded as the "crossroads of nine provinces," Wuhan continues to build on this legacy of economic vitality and mobility. Boosted by a series of national policies and already revered as one of the world's fastest growing hubs for technology and innovation, the city is advancing its ambition to be at the vanguard of China's next wave of progress.

The rapid expansion of China's High Speed Railway network has been instrumental in driving economic growth throughout the country at both the city and regional scale. Evidence of this initiative's success is the pairing of the Wuhan High Speed Railway station and the new Yangchun Lake Business District. Designed by Sasaki in collaboration with a diverse interdisciplinary team including Arup, JLL, and the Wuhan Planning Institute, the master plan was recently approved by the city, marking a major step forward as Wuhan embraces a progressive yet realistic vision for the district.

Once on the periphery of the urban core, a recent influx in population to Wuhan led to the rapid densification of the district, but absent a planning vision to accommodate for this growth. Reclamation of the lake's edge provided necessary land to respond to development pressures, but resulted in a detrimental impact to the water quality of Yangchun Lake. Another significant environmental concern was a large solid

waste landfill near the waterfront. These existing conditions inspired the Sasaki team to develop a series of five key remediation strategies that respond to these environmental challenges.

The first strategy was the naturalization of the existing canal network throughout the district. The formerly channelized waterways are restored to mimic natural processes including reestablishing their connection to the floodplain of the lake, managing stormwater to reduce impacts from flooding, improving the riparian habitat, and enhancing connectivity to the lake for both humans and wildlife.

Second, a strategy of constructed wetlands along the lake's edge filters urban runoff while providing critical habitat for a variety of avian, amphibian, aquatic, and terrestrial species. Designed with a series of boardwalks and trails that link to other recreational pedestrian routes throughout the district, the wetland establishes contiguous public access along the once privatized waterfront.

The third strategy was the creation of a system of greenways throughout the entire district that follows existing drainage patterns and major roadways. This system provides an urban tree canopy that offers numerous benefits including habitat creation, energy reduction by shading adjacent buildings, and a comfortable microclimate for pedestrians.

Fourth, a series of pocket parks are interspersed in each of the district's neighbourhoods, allowing for all residents to live within a 10 minute walk of a public landscape.



A series of organizing principles summarize the issues impacting the district and define key design strategies.



Illustrative Master Plan of the entire district.

With the environmental improvements and landscape interventions providing the initial armature for the new district, the plan was then organised around a comprehensive pedestrian network to promote walkability and a safer, human-scaled environment that links the district's parks, plazas, and streetscapes.



The commercial spine emphasizes the connection to the high-speed rail station and prioritizes pedestrian routes.



The mixed-use core fronts onto a central park and with a commercial spine linking to the high-speed rail station.

These pocket parks provide daily amenities such as playgrounds and sports fields while also incorporating rain gardens to collect, filter, and replenish groundwater while reducing the impacts of urban flooding. Finally, the fifth strategy was the creation of a new central park. Built upon a former solid waste landfill, the central park repurposes this once noxious use into a vibrant recreational and ecological amenity. When combined, these strategies provide a total of 368 hectares of new open space throughout the district in a variety of typologies that enhance the urban experience.

With the environmental improvements and landscape interventions providing the initial armature for the new district, the plan was then organised around a comprehensive pedestrian network to promote walkability and a safer, human-scaled environment that links the district's parks, plazas, and streetscapes. A series of north-south streets and linear open spaces connect interior landscapes to the lake, providing accessibility and establishing view corridors. Densifying the street grid to create smaller blocks and accommodating autonomous vehicle routes completes the urban design interventions the district. The master plan thoughtfully retained existing neighbourhoods to avoid disrupting social networks, while providing guidelines for diversifying land uses within parcels to foster new business opportunities for local residents and allowing for flexibility to accommodate future uses as the district evolves. The result is a landscape-forward urban blueprint that advances an environmentally progressive agenda and defines Wuhan's next generation of growth.



A layered public realm provides multiple spaces for people to interact with the outdoors ranging from sunken retail plazas to restaurant and café terraces to intimate pocket parks.

PROJECT DETAILS

Project Name: Wuhan Yangchun Lake Business District

Project Location: Wuhan, China

Client: Wuhan Planning Bureau

Architect: Sasaki in collaboration with Arup, JLL and the Wuhan Planning Institute

Size: 1,800 hectares (4,448 acres)

Completion: 2018

Photo Credit: Sasaki



D-Cube City



D-Cube City's vertical urban land use combines office, hotel, residential, retail, entertainment and cultural uses with over 17,000 square metres of landscaped gardens, rooftops, parks and plazas to create a major new public space in the highly dense capital city of over 10 million people.

/ Seoul, Korea



The lanterns create glowing light that filters through the exterior cladding at night to draw visitors into the project while providing a major visual landmark for the district.

D-Cube City in Seoul, Korea represents a significant new model for urban land use related to intelligent mixed-use, transit-oriented development. This cultural and commercial destination is one of the city's first fully integrated developments of its kind, made up of a six-level 80,000 square-metre retail/entertainment/culture complex with a major performance hall as its rooftop centerpiece, a 42-storey landmark office and hotel tower, and over six acres of new public landscape, parks and plazas. In addition to various programming components, ecologically-friendly and sustainable design strategies were used.

Located near the Yeouide district, south of the Hangang River, in a predominantly industrial zone, and connected to one of the City's busiest Metro lines, the project site used to be home to a large coal processing plant. The innovative transformation of the site from a former coal plant into a mixed use public district represents a major milestone for land redevelopment in Korea. The vision for the site is a co-existence of nature and culture within a highly dense urban environment by incorporating elements reminiscent of traditional Korea landscape painting of endless mountains and rivers.

By bringing nature into the built environment and establishing a root of public culture at the site, the Daesung Tower conveys the idea of growth and energy growing toward the sky while the namesake of D-Cube resulted as Daily (offerings & livability); Dream (desires & culture); and

Discovery (nature & experience).

Responding to the needs of the client, Daesung Industrial Co., Ltd. – a major energy company – a wide variety of natural expressions are interwoven into the project, effectively offering a green and blue oasis to the urban developments surrounding the project.

30 percent of the project's land area is dedicated to public parks. A vast new public park connects the adjacent Shindorim Station and D-Cube City's street-level entry with native landscaping, water features, and a large amphitheater, while establishing a natural complement to the recreation areas along the Dorim River across the street.

Among the design highlights are building forms organic to Korea that are shaped like Asian lanterns. The lanterns create glowing light that filters through the exterior cladding at night to draw visitors into the project while providing a major visual landmark for the district.

A six-level commercial retail centre – at the base of the tower – serves as the centerpiece of D-Cube City. The public common areas and circulation became the critical areas of focus to connect all vertical zones and program. The interiors provide an experience that reflects the journey one takes from base of the mountains to the peak.

D-Cube City was declared a winner at the Global Award of Excellence, Urban Land Institute. The project has also won a Gold Award, New Development Category, International Council of Shopping Centers.

The innovative transformation of the site from a former coal plant into a mixed use public district represents a major milestone for land redevelopment in Korea.

PROJECT DETAILS

Project Name: D-Cube City

Project Location: Seoul, Korea

Client: Daesung Industrial Co., Ltd

Architecture & Interior Design: JERDE

Size: 3,450,000 square feet

Components: A 42-storey landmark office and hotel tower & over six acres of new public landscape, parks and plazas

Completion: 2011

Photos: © JERDE



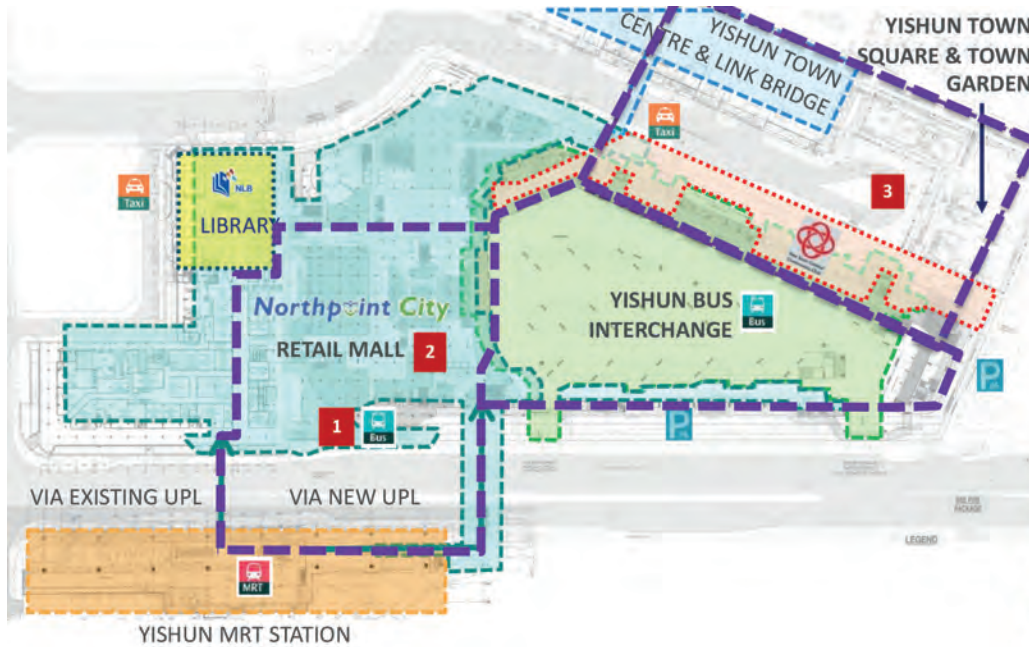
A vast new public park connects the adjacent Shindorim Station and D-Cube City's street-level entry with native landscaping, water features, and a large amphitheater, while establishing a natural complement to the recreation areas along the Dorim River across the street.



Northpoint City



/ Singapore



Yishun was one of the three heartland towns selected in 2007 to undergo the “Remaking Our Heartland” rejuvenation plans. This is part of Singapore’s HDB (Housing Development Board) initiative to renew estates to meet changing needs of the community, capitalize distinctive characteristics and create a distinct identity for each area.

Located at the heart of Yishun Central, the Northpoint City (NPC) project is designed to be a nexus where the community converges in a memorable environment that goes beyond shopping. It improves upon the existing Northpoint Shopping Centre which was completed by SAA in 1992 and integrates within it, a bus interchange, Nee Soon Central Community Club (the first community club to be located within a mall), a rooftop community garden with wet and dry playgrounds, Yishun Public Library and a 920 unit condominium located above the shopping podium.

TOD Living - Loops of connectivity that enhance, enrich and energize

Several loops were integrated into the design to improve connectivity to surrounding areas and transport nodes to enhance existing businesses, enrich community activities and energize community life. A seamless retail loop between NPC and Yishun MRT and a community loop linking the mall, bus interchange, town centre, town square and town garden, extends NPC’s vibrancy to the wider Yishun community.

Anchored in the existing Yishun Town Garden, a “lush green necklace” extends the greenery, and culminates onto the community garden. This ‘Landscape of Yishun’ forms an urban oasis that interweaves nature into suburban life, bringing families together and energizing communities. The greenery encourages interaction and play amidst the community, and promote transit living as it integrates

commerce, transportation and homes in a seamless and connected manner. To magnify the effect of a garden to the entire neighbourhood, the green necklace sweeps across the facade of the podium and culminates onto the roof garden on level 3, and the Environmental Decks of the 12 condominium towers.

Distinctive Character - Built on heritage and co-created with art

Leveraging heritage and cultural assets, help to transform the physical, social and economic identity of a space to form emotional connection between people and spaces. NPC’s flowing lines, accentuated by its abundant sky terraces and terracotta colours dialogue with the existing Yishun MRT station, giving NPC a distinct architectural identity on its exterior. Internally, the walls above the atrium were designed to prominently display the nostalgic mural featuring the transformation of Yishun from a plantation to today, acknowledging its past heritage. NPC mall management team also actively engaged with the community through community events, to piece together a colourful tapestry that combines different canvases of artwork. Endearing places are formed when people have a say and actively participate in the look and feel of spaces. Such acts of participation help build a sense of ownership toward the place, reinforcing the identity and pride that the community have towards it.

Connectivity and agglomeration of communities and activities within walkable distance around a transit node is central to developing quality urban spaces. Urban vibrancy holds the key to facilitating social interactions and human activities. The subtle qualitative aspects of a place that connects people emotionally to a place through heritage and art, with ample opportunities to form memorable experiences, is key to building endearing TODs.

A seamless retail loop between NPC and Yishun MRT and a community loop linking the mall, bus interchange, town centre, town square and town garden, extends NPC's vibrancy to the wider Yishun community.

PROJECT DETAILS

Project Name: Northpoint City

Project Location: Singapore

Client:

North Gem Development Pte Ltd & FC

North Gem Trustee Pte Ltd / Frasers Property Limited

Architect: SAA Architects Pte Ltd

Size: 130,637 square metres

Completion: 2019

Photos: © SAA Architects Pte Ltd | Finbarr Fallon





Interview with Melvin Tan, the new president of SIA

Ar. Melvin Tan. Photo credit: Wesley Loh

The Singapore Institute of Architects (SIA), has named Ar. Melvin Tan, as the president of the 62nd SIA Council. Melvin is the founding partner and deputy managing director of LAUD Architects in Singapore. Melvin has been active in SIA since 2019, serving as First Vice President alongside his predecessor Ar. Richard Lai in 2021. Throughout the Covid-19 crisis, they collaborated with members and stakeholders to overcome obstacles such as delays and manpower shortages, and engaged agencies on schemes to combat the pandemic's disruption. Melvin will head the 20-member SIA Council in 2022 for a one-year term. The 62nd SIA Council also welcomed six new members, offering to contribute fresh perspectives and innovative ideas. *SEAB* speaks to Melvin about his role and how the Council plans to move forward.

SEAB: Congratulations and thank you for taking time to do this interview. I understand that the theme for the new term is called "The Future of Architecture". What is this approach about?

Melvin: The theme reflects the need to raise awareness of what the future holds for the profession, and the necessity to come up with new and bold responses to counter the unprecedented challenges. The new council seeks to dialogue with members to exchange views on how architects practise now and envision how this could evolve in the future.

SEAB: What will be your focus as the SIA president?

Melvin: I will be focusing on creating an action plan to defend the future of the architectural profession. It is a pivotal time for architecture practices as we battle talent drain amidst continuous fee-cutting and rising cost pressures. It has never been easy to attract and retain young talents in our profession, with the common perception that architects are highly-stressed, overworked, underpaid, and unappreciated. There's no denying the pandemic has disrupted the industry even more. In SIA's recent survey with more than 500 young graduates and architects, only 7 percent have indicated that they are likely to stay in the architectural profession. Talent drain could become a reality if Singapore

fails to invest in a new generation of architects.

SEAB: What sort of strategy do you have for the built environment in Singapore?

Melvin: As the sole representative of the profession, SIA will continue to be the advocate and definitive voice for the architectural community. I am confident that through greater engagement with members and key stakeholders, SIA will be well-poised to adopt and spearhead transformations that will futureproof the profession and take the nation forward.

SIA will launch a multi-pronged plan to retain talent, evolve the architects' roles, and further augment the value the profession brings to Singaporeans' well-

being through the built environment.

1. Value Articulation: Room to Grow

As the built environment becomes more sophisticated, architects naturally take on more responsibilities and consequently more risks and liabilities. Value articulation is thus as vital as the skill sets of the architect acting as the Lead Consultant and Qualified Person, to verify not just the obvious costs of business but also the intangible abilities that are critical when delivering projects. An ecosystem of continual training at SIA and in practice is being set up to equip architects with new skills, new management frameworks and new responsibility matrices. This creates more and clearer pathways within the profession for talents to continue contributing to Singapore's nation-building and to better represent the capabilities of practising specialists.

2. Mentorship Programme: Wellbeing and Fulfilment

Launched by the Young Architects League (YAL), the Mentorship Programme aims to support the next generation of architects as they prepare for their careers in architecture. Architecture students in polytechnics and universities are connected to experienced architects for regular check-ins, to gain a broader perspective and understanding of the industry practice.

This year, the programme will be expanded to include young graduates who are still finding their feet in the industry to guide and support them. SIA is committed to stepping up efforts

to bring even more of the fresh and the wise closely together to tighten the knit of the architectural community.

3. Digital Transformation: Lifting the Value Ceiling

SIA will continue to engage the profession on new digital solutions, and support the advancement of technical and technological capabilities of architects, to increase their business efficiency and competitiveness. SIA is currently facilitating the development and industry adoption of digital initiatives, including the Integrated Digital Delivery (IDD), to integrate and digitalise the BE value chain; and CorenetX, a harmonised submission and regulatory approvals digital portal.

It is imperative that architects as lead consultants, helm the charge for digital transformation, not only in terms of know-how, but also focusing on creating more value by using their creativity and design thinking capabilities to explore new opportunities in constructing Singapore's future landscape.

SEAB: What challenges or obstacles do you see in achieving the above-mentioned strategies?

Melvin: One of the greatest challenges is that the current difficult practice landscape has pressured architects to become self-serving in order to fend for themselves. I believe that together, we can overcome and achieve more. If the community can come together and form a strong collective consensus, then our efforts for change can truly be felt. A strong team starts with an individual. SIA

"As we re-imagine the role of an architect, how can we adapt and innovate to meet the future of our profession and craft? How can architecture practices evolve to provide wider and more holistic solutions across disciplinary boundaries? How can we update our competencies to create more value as thought leaders in the Built Environment (BE) sector? It is a call for us to take immediate action as the long-term future of the profession depends on what we do now. Moving forward, SIA will continue to champion the interest of our profession, and be the catalyst and galvanising body to lead the industry's transformation."

– Ar. Melvin Tan

is heartened that there are many who are willing to contribute their time and make a stand for the betterment of the industry. And at SIA, we will champion these causes together.



DECK Art Gallery at Prinsep Street in Singapore, a project by LAUD Architects. Photo credit: LAUD Architects



Sparkletots Preschool by PCF at Punggol in Singapore, a project by LAUD Architects. Photo credit: LAUD Architects

Redesigning the office to attract and retain millennials

Text by Adriana Voegeli, Digital Communication, dormakaba.
Photos courtesy of dormakaba



Millennials (also known as Generation Y), the generation born between 1981 and 1996, are taking offices by storm. By 2025, 75 percent of the global workforce will be millennials. In parts of Europe and North America, they are already the largest working cohort.

Millions of millennials worldwide share common experiences: They survived the 2008 financial crisis. They were online all their adult lives, and are probably more educated than their parents. While generational traits might differ across cultures, these events shaped some of the core values of this generation.

As a result, millennials tend to be tech-savvy, achievement-oriented, and more global-minded. Growing up in a time of

global insecurity, this generation identifies strongly with their work.

These traits make millennial employees a significant asset for companies. However, in their continuous quest for purpose and self-improvement, millennials are not afraid to leave a company that does not meet their expectations. Inefficient and unpleasant work environments are among the top reasons that compel them to seek greener pastures. To retain talent and reduce turnover, how can modern offices adjust themselves to meet the expectations of the millennial majority?

Fear not the flexibility

Rigid schedules and inflexible attitudes in work are the



Hybrid or full telecommuting has benefits not only for the employee, but can allow the employer to reduce costs simultaneously.



exivo is a simple, flexible and secure access control system that offers a user-friendly solution for your organisation.

quickest ways to alienate the millennial employees. According to one study, 77 percent of millennials believe flexible jobs would make them more productive. Some studies even show that millennials would favour flexibility over a pay rise. While the members of this generation are some of the hardest workers, they often display a common desire to perform their duties on their own terms. Hence, office cultures that are willing to accommodate flexible working schedules not only attract and retain the millennial talent more, but maintain a high level of morale and productivity.

In recent years, the global pandemic has forced an upward adoption of "working from home". As markets reopen, many companies are taking advantage of the digital infrastructure they have built over the course of the pandemic to continue a hybrid or complete remote work arrangement. Although some may still prefer to work from the office, many millennials have expressed their preference for the flexibility to decide.

The strict adherence to returning entirely working from office has even been noted a "red flag", and a sign of an organisation that is rigid and archaic.

As telecommuting options increase job satisfaction, a digital infrastructure to allow this is imperative for future-forward companies to thrive.

Drastic digital integration

The 2010s were a breakthrough period for the popularization of smartphone technologies. Once considered a luxury, smartphones, among other digital gadgets, are now ubiquitous.

Millennials were the first generation who were able to spend the majority of their adult lives online and continuously connected. This connectivity had a dramatic impact on anything from the way they consume the media to their approaches to work. Hence, they demand their ideal office to be well-integrated with these technologies that make their lives easier. Millennials no longer expect to wait in line to punch

a card, or fill out timesheets.

From personalized access to the offices using smartphones to the IoT-powered office lightning, digital integration keeps millennial workers happy.

Spiking up the sustainability

As the world is facing a climate change emergency, millennials are among the groups concerned most about the issue. From favouring clean energy to optimizing their water use, they take more eco-friendly decisions in day-to-day life than the previous generations. Hence, they want their offices to reflect these values and are committed to sustainability.

With their great love for indoor plants, millennials also favour biophilic elements in office design – which reduce the stress levels of employees.

Attracting and retaining the millennial talent is only one perk of sustainable office environments. Greener offices cut costs and create a more productive, happier, and healthier work environment for everyone.

Millennials are re-defining work

Millennials are not the future; they're the present. Over the next several decades, their values and demands will keep shaping the global economy and shift the work culture.

The companies who understand the needs of millennials and cater to them are poised to take full advantage of one of modern history's most drastic demographic changes.



dormakaba is the first company in the access solutions industry to have emissions targets approved by the Science Based Targets initiative. A wide range of dormakaba products have Environmental Product Declarations (EPDs) available – a documentation of each product or product group's environmental impact along its whole life cycle.

Yatin Tayalia appointed Managing Director of Xylem India

Rye Brook, New York, USA – Xylem Inc., a leading global water technology company, has announced the appointment of Yatin Tayalia as Managing Director of Xylem in India. Current Managing Director Nitin Bhate will be taking on a new role as the Global Director and General Manager of Xylem Custom Pumps. Tayalia will report to Franz Cerwinka, President, Emerging Markets, and will be based in Bangalore, India.

"Yatin brings extensive experience in water management and advanced technologies in water, aligned with our continuing development and growth in India," said Franz Cerwinka. "He is recognised as a thought leader in both the sector and region for water management, water reuse and driving advanced technologies in water and wastewater treatment. A veteran of the industry, he brings a deep passion for water technology having co-authored more than 10 patents and published multiple technical and policy journal articles. We're thrilled to welcome him to our leadership team."

Prior to this appointment, Yatin Tayalia served as Senior Vice-President and Business Leader for South Asia at SUEZ Water Technologies and Solutions. He has over 25 years of experience in water, chemicals and computational analysis industries across Asia, with diversified leadership experience in business, sales, commercial, product and technology management. Tayalia has an integrated Bachelors and Masters of Technology in Chemical Engineering from the Indian Institute of Technology, Mumbai.



Yatin Tayalia

Hira Industries inaugurates new showroom in Ajman

Dubai, UAE – Hira Industries, one of the region's largest manufacturers of HVAC and construction products has inaugurated its new showroom in Ajman. This new facility is in accordance with Hira's objective of providing customers with service that exceeds their expectations, and it intends to broaden the company's product and service offerings to clients and projects.

The new showroom will exhibit Hira's world-leading products and solutions. The brand-new showroom will offer Hira's complete product portfolio, including Aerofoam Thermal Insulation solutions, Aeroduct Ducting Accessories, Maico Ventilation Products, Diamond Adhesive Tapes, RubTech Rubber Products and Diamond Walraven Pipe Support Systems.

Umesh Unni, General Manager, Hira Industries LLC, said: "The HVAC and construction industry in the UAE is poised for a substantial expansion. Considering the number of projects taking shape in the Emirates, our decision to open the new showroom was prompted by increased business and the need to accommodate rapid expansion. At Hira, we aim to be market leaders in the



Image provided by Hira Industries LLC.

segments and regions we choose to compete in by providing value added products and services more closely to our clients, exceeding their expectations. The new showroom will enable us to offer the best support and services to the customers."

The new showroom in Ajman is staffed with professional service agents designed to handle everything from

client demonstrations to ensuring that all possible customer after-sales requirements are met at a single destination. In the UAE since 1980, Hira Industries has been the largest HVAC and construction materials manufacturing company in the region, with 30+ sales offices all over the world, 14 production units, 1,500 team members from 40 nationalities locally and globally.

Johnson Controls-Hitachi Air Conditioning launch airHome



400 series. Photo credit: Johnson Controls-Hitachi Air Conditioning

Tokyo, Japan – Johnson Controls-Hitachi Air Conditioning globally launched the Hitachi smart residential air conditioner series named airHome, equipped with a variety of smart and intuitive functions that will help users maintain a comfortable indoor environment while improving indoor air quality (IAQ) as well as saving energy. The first model of the airHome series will first be available throughout Europe starting with France this April and later becoming available in Asia.¹

airHome's technology is designed to seamlessly accommodate people and their lifestyles, saving them the stress of finding the right system in an ever-growing market while sustaining performance year after year and proactively managing user's indoor air quality. airHome is equipped with the FrostWash™ function to keep the heat exchanger in a cleaner condition, providing a more comfortable indoor environment. FrostWash™ is an automatic self-cleaning feature that freezes the heat exchanger down to -15°C to trap pollutants and dust in ice, which then melts to flush them away. This leaves the unit cleaner and dramatically reduces the possibility of pollutants being spread from the AC unit across the room. Tests have shown that systems with FrostWash™ are three times better at maintaining airflow

performance than those without this technology². With this technology, users can enjoy the benefits of airHome with easy maintenance.

The airHome series is the air conditioner for people who do not want to think about air conditioners but just want to live in harmony with all possible features and advantages.

¹ Product features will vary depending on the country, region, and model.

² Two identical units were tested for comparison; with and without FrostWash™. Test chamber simulated approximately two years of dust and oil build up which may be experienced in a typical home environment. Airflow performance was tested before and after being in the chamber. Unit without FrostWash™ experienced an 18 percent drop in airflow performance. Unit with FrostWash™ experienced only a 6 percent performance drop. Tested at Johnson Controls-Hitachi Tochigi factory, Japan. In actual use, these benefits will vary depending on room size, room usage, outdoor temperature and humidity, and other usage conditions. Test results cannot be applied to all actual use environments.

MANN+HUMMEL selects C-TEC's innovative new CAST ZFP addressable fire system for one of its UK sites

Wigan, UK – A global expert in the field of filtration, MANN+HUMMEL employs 15,000 people at more than 50 locations worldwide and has a turnover of more than 3 billion Euros. In 2014, it acquired Vokes Air manufacturing plant in Burnley to increase its presence in the booming filtration and air purification market.

Last year, the company identified the need for a powerful new fire alarm system to protect the site. Further to consultations with Lancashire-based specialist installation company, ADJ Fire and Security, the decision was taken to install one of C-TEC's new CAST addressable fire systems comprising a network of ZFP 1-loop touchscreen-controlled panels connected to over 250 CAST devices including heat detectors embedded with C-TEC's unique 'HEART' (HEat Analysis and Response Technology) algorithms to ensure each one remains in a high state of readiness for a potential fire alarm situation.

Steve Hutchinson, Head of Sales at ADJ, said: "We were delighted to be asked to equip the MANN+HUMMEL Vokes Air site with an L1 fire detection and alarm system developed by one of the UK's leading manufacturers of life-safety systems. The fact that C-TEC is based in the North-West was important to ourselves and our client as we are both keen to support local manufacturers



wherever possible particularly those which produce such high-quality equipment."

"Performance-wise, CAST is fast, reliable and incredibly powerful. As a 40V loop driven system, it allows you to put twice as many devices on a loop compared to other manufacturers' systems. The soft-addressing nature of the system also means it is simple-to-install, programme and commission as all the devices can be easily programmed at the panel.

"Another key factor as to why we

chose CAST is C-TEC's outstanding free-of-charge technical support service. Terry Gordon, the company's Technical Support Manager, and his team have been absolutely amazing, offering advice, answering any queries we had and providing phenomenal technical support throughout. I cannot praise them highly enough."

Certified to all relevant EN54 product standards, including EN54-13, CAST is C-TEC's own UK manufactured 'distributed intelligence' addressable fire detection and alarm system.

Trina Solar wins Red Dot Product Design Award

Changzhou, China – Trina Solar, a leading global PV and smart energy total solution provider, has received the Red Dot Design Award, the product and industrial design award known as the 'Oscars' of the design world.

The Chinese PV maker's Vertex S series of sleek, high-power and high-efficiency modules was selected out of nearly 10,000 entries from more than 60 countries for its advanced design concept and excellent user experience.

The Vertex S module is designed for residential rooftops which means the product not only has high power, high capacity and high reliability; but is also designed for aesthetics. Vertex S has been unanimously praised by the global distributed module market and professionals, and favored by distributors and customers around the world. Thanks to the advanced design and outstanding craftsmanship, it perfectly meets the high standards of the Red Dot Design Award from product function to appearance design.

The beauty of modern craftsmanship

TrinaSolar's Vertex S series modules feature innovative and design-inspired aesthetics along with excellent product performance. Vertex S comes with several design options, including the all-black appearance, to match different architectural styles and application scenarios. This gives more possibilities for distributed rooftop spaces, while keeping the commitment to environmental protection.

The Vertex S all-black module has black cells, with ultra-fine busbars, together with a black frame and back-sheet; making the whole product visually appealing. The unique and outstanding aesthetic effect of the all-black design carries a simple and advanced temperament, highlighting the beauty of modern craftsmanship.



Trina Solar's Vertex S. Photo credit: Trina Solar

Mitsubishi Electric to expand production capacity at A/C base in Turkey



Mitsubishi Electric Air Conditioning Systems Manufacturing Turkey (Factory 1)

Tokyo, Japan – Mitsubishi Electric Corporation recently announced that it will invest 1.44 billion Turkish lira (113 million USD) in a new plant at Mitsubishi Electric Air Conditioning Systems Manufacturing Turkey Joint Stock Company (MACT), the company's air-conditioner production base in Turkey.

The expansion will expand MACT's annual capacity for air-to-water (ATW) heat pumps* to 300,000 units, up by 100,000 units from current capacity, and room air conditioners to 1,100,000 units, up by 300,000 units.

Production will begin in February 2024. Mitsubishi Electric is growing

its global Heating, Ventilation and Air-Conditioning (HVAC) business under an expansion strategy through 2025 that is focused especially on the European heating-system market. Conventional boiler-type heaters that rely on fossil fuel are rapidly being replaced with ATW heat pumps in line with Europe's decarbonization policies, which is driving the rapid growth of the ATW market in Turkey and across Europe.

Meanwhile, ongoing climate change is stimulating increased demand for room air conditioners, which are increasingly being viewed by local consumers as commodities rather than luxuries.

Eco-friendly CO₂-emission-reduction measures at the plant will include enhanced thermal insulation, exhaust air heat recovery and effective use of renewable energy. Mitsubishi Electric has continued to invest in MACT since establishing the subsidiary company in 2016, including making an additional investment of 222 million Turkish lira (17.3 million USD) in 2021.

* Hot-water heating/supply system that uses heat-pump technology to transfer heat from outside air to water, which is then circulated indoors to warm entire houses

SUBSCRIPTION FORM

Email us at info@tradelinkmedia.com.sg

Please (✓) tick in the boxes.

PRINT



Southeast Asia Building
Since 1974



Southeast Asia Construction
Since 1994

1 year (6 issues) per magazine

Singapore	SGD\$60.00
Malaysia / Brunei	SGD\$105.00
Asia	SGD\$155.00
America, Europe	SGD\$185.00
Japan, Australia, New Zealand	SGD\$185.00
Middle East	SGD\$185.00



Bathroom + Kitchen Today
Since 2001

1 year (4 issues) per magazine

Singapore	SGD\$32.00
Malaysia / Brunei	SGD\$70.00
Asia	SGD\$85.00
America, Europe	SGD\$135.00
Japan, Australia, New Zealand	SGD\$135.00
Middle East	SGD\$135.00

DIGITAL



Lighting Today

is available on digital platform.
To download free PDF copy,
please visit:

<http://lt.tradelinkmedia.biz>

Lighting Today
Since 2002



Security Solutions Today

is available on digital platform.
To download free PDF copy,
please visit:

<http://sst.tradelinkmedia.biz>

Security Solutions Today
Since 1992

Personal Particulars

Name: _____
Position: _____
Company: _____
Address: _____
Tel: _____ Fax: _____
E-Mail: _____

IMPORTANT

Please commence my subscription in
_____ (month/year)

Professionals (choose one):

- Architect Landscape Architect Interior Designer Developer/Owner
 Property Manager Manufacturer/Supplier Engineer Others

I am sending a cheque/bank draft payable to:

Trade Link Media Pte Ltd, 101 Lorong 23, Geylang, #06-04, Prosper House, Singapore 388399

Co. Reg. No: 199204277K * GST inclusive (GST Reg. No: M2-0108708-2)

Please charge my credit card (circle one): Amex / Diner's Club

Card Number: _____ Expiry Date: _____

Name of Card Holder: _____ Signature: _____

Abelwood Evolution Lining adds texture and warmth to any space

Handcrafted from the finest hardwood regrowth Tasmanian Oak, Abelwood Evolution Lining adds texture and warmth to any space, with a tactile natural appeal that offers versatility for a range of interior design applications including walls, ceilings, and cabinetry.

Available in a range of innovative profiles from soft curves to angular & geometric, the Prime Grade features of the lining offer a clear and consistent grain, with a mild mix of natural features.

Each lining profile is light in colour, varying from straw to reddish brown with intermediate shades of cream to pink and offers excellent staining properties, allowing easy matching with other timbers, finishes and furnishings and are available in 80mm widths and a wide range of set lengths.

The Abelwood Evolution Lining is available from Abelwood.



Photo credit: Abelwood

Floorrich introduces new vinyl flooring

FirmaVinyl
Dimension: 5mm x 180mm x 1220mm



Photo credit: Floorrich

Floorrich Global Pte. Ltd., a leading flooring company in Singapore has introduced FirmaVinyl. FirmaVinyl series is expertly designed to redefine vinyl flooring for modern homes with an exceptionally realistic natural look, and seamless edge. With an extra touch of matte finish and various textures embossed, FirmaVinyl exudes real wood elegance without the drawbacks that sometimes come with a natural product.

Made of Polyvinyl Chloride (PVC), stone powder, and stabilizer, a flexible and versatile flooring is created. Its core layer is water-resistant, topped with a printed film layer, transparent wear layer, and UV-cured coating. FirmaVinyl comes with a glue-less click system, making it easy to install and repair.

FirmaVinyl is eco-friendly and phthalates free (non-toxic) – an important factor for those with young children, elderly or pets at home. Moreover, it is extremely quiet, comfortable underfoot, non-slip, resilient and waterproof. With a wear layer between 0.3mm to 0.5mm thick, FirmaVinyl can undertake lots of wear and tear, making it long-lasting with minimal maintenance.

BAUX is expanding their award-winning wood wool assortment - introducing acoustic ceilings

Adding to a portfolio of acoustics products which have taken the commercial architecture and design world by storm – the launch sees a brand-new product category for BAUX, entering for the first time, the ceiling market for Acoustic Design.

The new panels are made from Wood Wool; a material that has been installed in ceilings to improve acoustics for generations. BAUX is reinventing this trusted building material to create something timeless and beautiful, whilst opening up new opportunities for interior design. Milled patterns run across the panels and when installed, can help to transform any environment into a more design-led and curated interior setting.

“With this launch, we are strengthening our position within sustainable Acoustic Design. The demand for beautifully designed ceiling products is growing by the day, making this launch so exciting for us. Architects and designers will now be able to specify BAUX products holistically, alongside our other products, which has been our ambition since we founded the company in 2014,” said Fredrik Franzon, CEO, BAUX.

BAUX got your ceilings covered. Optimised for flexible installation. Three patterns. Boundless colour options. Easy to cut, crop and adapt. The new Ceiling Panels are designed by BAUX Co-Founders from Form Us With Love in Stockholm. “BAUX Acoustic Ceilings will be covered in our yearly climate

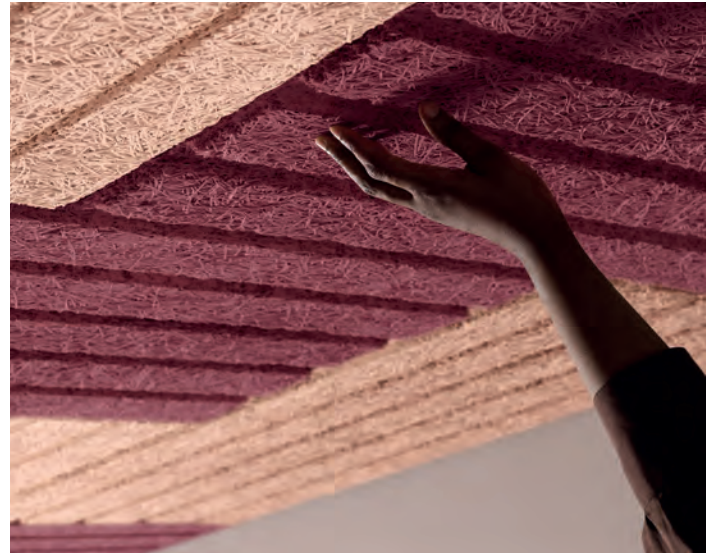


Photo credit: BAUX

report. We are climate compensating for all our emissions through offsetting to development projects around the world – all in accordance to the UNFCCC and the Climate Neutral Now initiative,” said Niki Gynnerstedt, Head of Marketing, BAUX.

New complete ceiling solution from Lindner

Arnstorf, Germany – Until now, multifunctional ceiling systems have provided a pleasant room climate, good room acoustics and a modern design. But Plafotherm® All in One is more than that: The canopy ceiling from Lindner represents a complete solution. In addition to air conditioning, design and acoustics, Plafotherm® All in One also combines ventilation and lighting components in one product.

“All in one product”

Functionality paired with visual appearance is already familiar from the Plafotherm® canopy ceiling: With the help of innovative heating/cooling technology and a perforated surface, the ceiling ensures optimum room comfort and acoustics. The new multifunctional heated and chilled ceiling can also be supplemented with integrated lighting solutions and invisible ventilation systems. Plafotherm® All in One can

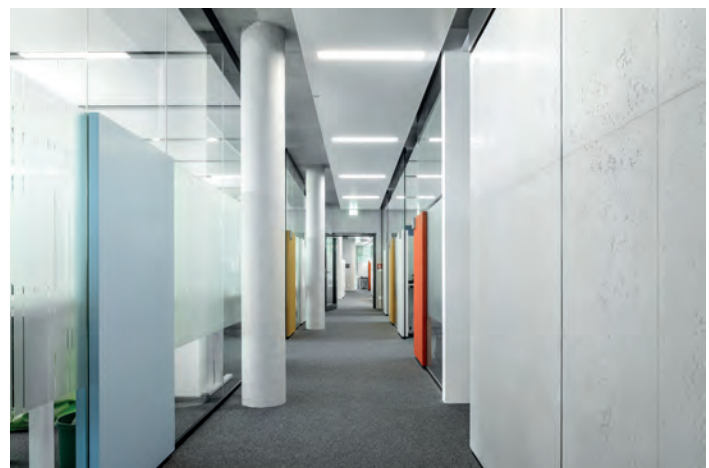


Photo credit: Lindner Group

thus be combined with Lindner's AirBox or AirHybrid supply air elements (with induction nozzles) – for a pleasant supply of fresh air and air distribution in the room. Hidden at the back of the canopy ceiling, the ventilation elements have no influence on the modern appearance of the ceiling.

Performance and appearance in harmony

In order to deliver an optimal result, the individual components of the Plafotherm® All in One are perfectly matched to each other. The prefabricated complete solution is equipped with the switchable and optionally dimmable QZI luminaire with a light output of 2,700 lumens. The canopy dimensions of 4,000 x 1,100 mm, the surface in COLOURline RAL 9016 and a perforation of Rv 1,8 - 20 are also defined as the basis. The

specified dimensions and elements enable Lindner to provide concrete information on the heating and cooling capacity of the ceiling: This is the only way to ensure that there are no dependencies in terms of performance and to guarantee concrete key figures in the planning. The complete ceiling solution thus convinces with capacities of up to 545 W/unit in cooling mode and up to 660 W/unit in heating mode.

Also available as a special solution

However, Lindner also offers project-specific solutions of the Plafotherm® All in One: The canopy ceiling can be adapted to the colour concept of the building entirely according to the customer's wishes. In addition, the special solution can also be customised in terms of dimensions and perforation.

Sugatsune Global unveils Pocket Door Systems



Photo credit: Sugatsune Kogyo Co., Ltd.



Pocket Door Systems are an innovative approach to saving space. After the doors are open, they slide into hidden pockets on the side of the unit. This helps economize space so that it can be fully utilized. Sugatsune's Pocket Door Systems come in many different types to meet a variety of needs of sizes and installations.

Geo Connect Asia 2022 showcases geospatial technologies and talks



Photo credit: Montgomery Asia

Geo Connect Asia (GCA) 2022, the second edition of Southeast Asia's flagship geospatial and location intelligence industry trade show and conference, took place from June 1-2 2022 at Marina Bay Sands Expo & Convention Centre.

Organised by Montgomery Asia, the two-day event was attended by 2,000 professional visitors and delegates. GCA 2022 showcased a wide range of solutions for the geospatial industry such as digital construction, surveying and monitoring equipment, sensors, satellite tracking, drones, robotics and mapping solutions, amongst many others.

Guest of Honour Edwin Tong SC, Minister for Culture, Community and Youth and Second Minister for Law; Rupert Owen, Co-Founder of Geo Connect Asia; and Colin Low, Chief Executive of the Singapore Land Authority (SLA), addressed visitors, delegates and exhibitors in their opening speeches. The opening ceremony was followed by the signing of a Memorandum of Understanding (MoU) between SLA and the

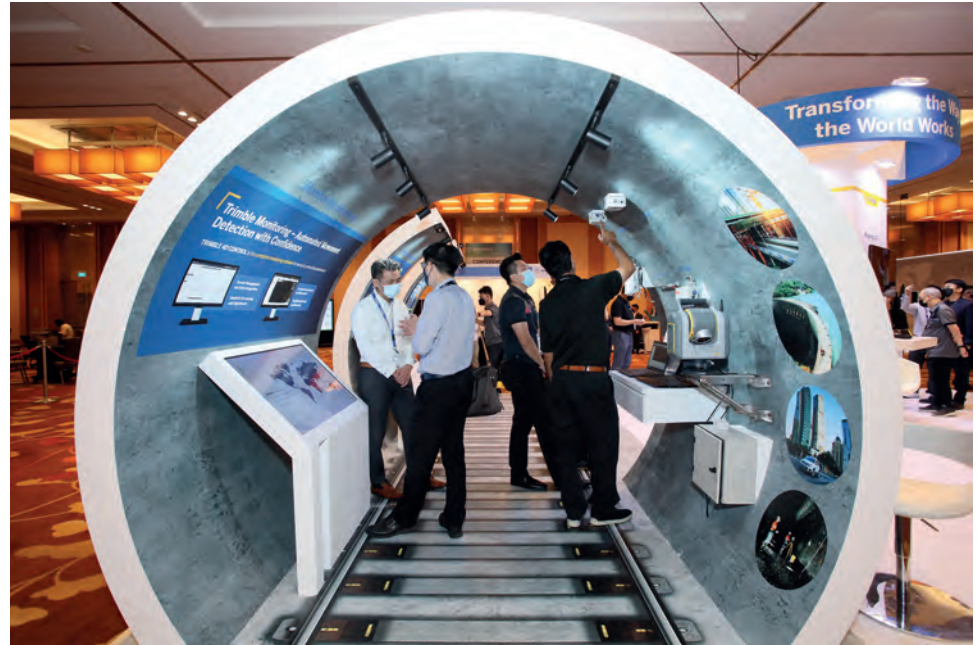


Photo credit: Montgomery Asia



Photo credit: Montgomery Asia



Photo credit: Montgomery Asia

Real Estate Developers' Association of Singapore (REDAS) to jointly promote awareness of geospatial technologies and organise joint events as well as capability development programs that can provide solutions to address the challenges faced by the real estate and related industries.

Themed "Geospatial & Location Intelligence Solutions for Asia – Underground, Land & Sea to Sky", GCA 2022 addressed the increasing interplay between ground and satellite technologies, artificial intelligence (AI)

and data analytics. Over 40 leading companies from 14 countries, such as Trimble, Planet, Screening Eagle, Leica Geosystems, Synspective and Vizzio Technologies, showcased their latest technologies and solutions for government and not-for-profit markets and multiple industry verticals.

GCA 2022 was held alongside its two complementary industry events – Digital Construction Asia (DCA) and Unmanned Aerial Vehicle (UAV) Asia – and comprised a virtual component on www.GeoConnectAsia.com, where all attendees could schedule meetings to meet online and onsite with the exhibitors and watch the live streamed conference.

Rupert Owen, Co-founder of Geo Connect Asia, said, "Montgomery Asia is excited to host the second edition of GCA

and is pleased to welcome the increasing number of international exhibitors, combined with a growing international delegate and visitor attendance. It is a real achievement to receive the support of over 60 industry partners, and we would especially like to thank SLA for their continued support as GCA's strategic partner, enabling us to create a high-level conference programme for the geospatial community."

The GeoConnectAsia2022 Conference titled "Imagination meets reality: placing geospatial solutions at the heart of decision-making" aimed to address key issues of data collection, storage, interoperability and utilisation, and showcased the application of artificial intelligence (AI) and data analytics in spurring our advancement towards a Geospatial 4.0 world.

Dabeoo offers spatial data for indoors and outdoors

Dabeoo is a leading provider of spatial data for indoors and outdoors. Based in Seoul, Korea, the company's key product is called AREArth. It is a platform service for A to Z of AREArth (indoor map). Through this platform, you can easily generate, edit and manage indoor map data which can be used in a various way with API / SDK for any indoor service.

Characteristics:

- Vector-based through ultra light weighted indoor map data.
- Shortened construction period using CAD/PNG/JPG as well as self-drawing.
- Construction / operation cost reduction.
- Provision of efficiency in operation by API/SDK/ROS.

"It provides real-time update and makes the job of creating maps easy and efficient," said Sunhee Jung, Business Strategy Team / Manager, Dabeoo.



Sunhee Jung, Business Strategy Team / Manager, Dabeoo at the company's booth.

For more information, visit www.dabeoo.com.

Phase One offers superior imaging solutions

Phase One, based in Copenhagen, Denmark, manufactures medium format cameras and imaging systems for commercial, aerial and fine art photography, and digitization.

Founded in 1993, Phase One is a pioneer of digital imaging. The company has developed core imaging technologies and a range of digital cameras and imaging modules. Phase One provides one of the world's highest image qualities in terms of resolution, dynamic range, color fidelity and geometric accuracy. As such, it has grown to become a leading provider of high-end imaging technology across many business segments. This includes both hardware and software for aerial mapping, industrial inspection and cultural heritage digitization, as well as serving the world's most demanding photographers.



Michael Fu, Business Development Director, SEA, Digitalization & Geospatial, Phase One, at the company's booth.

According to the company, its Phase One P3 Payload offers unmatched inspection productivity. It is developed for DJI M300, MAVlink & Auterion supported drones.

With DJI M300 and ready-for-integration with MAVlink drones, the P3 increases your inspection productivity through its ease of installation, superior data output, and uncompromised image details.

Equipped with a medium format Phase One iXM camera and a sensor that is 1.7 times larger than other cameras, it captures more details in each frame. In addition, iXM cameras boast the highest dynamic range and have various lens options ranging from 35mm to 150mm, the latter being the longest option available for small UAVs.

"Our product is used for a wide range of applications such as wind turbine datasets, powerline datasets, water dams, power lines, pipelines, winter binds and building facades. More importantly, it has a very big sensor size that is 100 mega pixels, which is the top of the line product," said Michael Fu, Business Development Director, SEA, Digitalization & Geospatial, Phase One.

The company has been in the Singapore market for the past one year. Its nearest offices are located in Hong Kong and Japan.

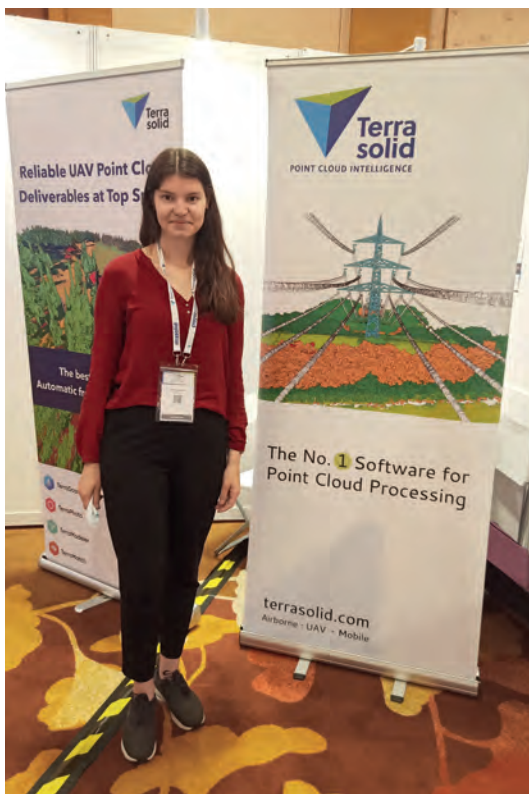
For more information, visit www.phaseone.com.

Terrasolid provides a world-class point cloud and image processing software

Terrasolid software offers unrivaled capabilities for processing point clouds and images no matter the sensor, system or data size. Leading experts across different industries, from engineering to the environmental, trust Terrasolid software for their mapping needs.

Users can calibrate, match or classify raw data to create fully classified point clouds, 3D vector models, terrain representations, advanced visualizations or extract features seamlessly. Images can, in addition, provide greater insights into the workflow by texturing models, colorizing point clouds and generating rectified images.

"Besides, thanks to the new processing wizard included in TerraScan, every user can produce high quality deliverables automatically and at top speed," said Justina Kliukaite, who works as a Support Engineer at Terrasolid.



Justina Kliukaite at the Terrasolid booth.

For more information, visit <https://terrasolid.com>.

SI Analytics provides GEO Intelligence Analytics solution with AI

SI Analytics provides GEO Intelligence Analytics solution by analyzing satellite and aerial imagery with AI technology.

"Global mega and large construction sites can be monitored using our satellite imagery analytics," said Yoon Park, Business Development / Sales Manager, SI Analytics.

SI Analytics featured AI packs comprise of: Super Enhancement, Mega Construction Site Monitoring and AI Native GEOINT Solution (Object and Change Detection, Classification, Segmentation)



SI Analytics CEO Taegyun Jeon (left) attended the GCA show 2022 with Yoon Park (right), Business Development / Sales Manager, SI Analytics.

Super Enhancement

Service of adjusting Satellite Aerial images so that results are more suitable for further image analysis.

Mega Construction Site Monitoring

Using the latest satellite imagery enables construction to be tracked remotely saving valuable resources.

AI Native GEOINT Solution

The company is keen to accelerate the use of AI analytics in various fields to nurture AI expert.

The AI Native GEOINT Solution can be used for building segmentation and road segmentation.

Detection of buildings is an important part of the automated satellite image interpretation problem. Detection of buildings enables creation of maps, detecting changes, and monitoring urbanisation.

Road network detection from overhead imagery is of great interest to a diverse set of disciplines, from humanitarian crisis to autonomous vehicles. Road mapping remains especially challenging in broad expanses of underdeveloped regions.

For more information, visit www.si-analytics.ai.

SimActive Inc. specialises in high-end photogrammetry software

SimActive Inc., a Canadian firm set up in 2003, offers a high-end photogrammetry software called CORRELATOR3D™.

"Our software allows you to process large volumes of aerial imagery acquired from drones, satellites and aircraft very quickly," said Vivian Raiborde, Senior Sales Advisor, SimActive Inc.

The company has clients in over 100 countries and they include the US army and French army. In Asia, it has clients in Malaysia, Indonesia, Thailand and Laos.

CORRELATOR3D™ works on a simple workflow: Aerial triangulation, Point clouds, Digital surface models (DSM), Digital terrain models (DTM), Orthomosaics and 3D models.

It is a leading technology, with a powerful user interface, capable of fast processing of an unlimited number of images on GPUs and multi-core CPUs to provide survey-grade accuracy with detailed reports. Processing speeds can further be boosted using its distributed processing capabilities over multiple PCs.

CORRELATOR3D™ offers exceptional accuracy for many industries such as Surveying, Mining, Construction, Forestry, Agriculture and Emergency Response.

In the past, the company has exhibited multiple times in the region, but it was its first large Asian event since the beginning of the pandemic. Its team was in Singapore to meet all its clients and partners across SEA.



Vivian Raiborde,
Senior Sales Advisor,
SimActive Inc.

For more information, visit www.simactive.com.

Angelswing showcases digital twin platform



Peter Park, CEO of Angelswing at his booth.

Angelswing, a company based in Seoul, South Korea, manufactures digital twin platform for construction job sites. Its solution offers realistic site monitoring, quick and accurate survey and reliable safety planning and simulation to construction job sites.

Its digital twin solution comprises of: Site Documentation with Reality Capture, Site Management with Construction Workflow, Site Survey with Convenient Measurement and Site Safety with Planning & Simulation.

It was the company's first time participation at Geo Connect Asia 2022. Commenting on the solutions, Peter Park, CEO of Angelswing said that their digital twin helps their clients to plan their work better. "Our products help our clients to operate their job sites safely and also see faster and cheaper benefits compared to traditional method," said Peter.

For more information, visit <https://angelswing.io/en>.

Synspective Inc. specialises in radar satellites and data analysis

Synspective Inc. uses geospatial data from its SAR satellites to provide one-stop solutions with a mission to create a progressive world based on real data. The company is building a constellation of SAR satellites around the world to provide data and analytic information to governments and commercial outfits.

Synspective combines in-house data with data from various satellites and IoT, and analyse these large amounts of data using data science and machine learning.

"We manufacture and launch our own constellation of SAR satellites. Besides providing imagery, we also provide solutions such as land displacement monitoring, flood and disaster analysis," said Elizabeth Wong from Synspective Inc.

Synspective's small SAR satellite technology derives from the Japanese government's innovative R&D programme, imPACT. SAR stands for "Synthetic Aperture Radar". SAR satellites use microwaves to observe the shape of terrains and structures. Microwaves have the ability to pass through the Earth's atmosphere thus making the Earth's surface visible under all climatological conditions.

Synspective aims to build a constellation of six satellites by 2023 and 30 satellites by around 2026.



Elizabeth Wong (extreme left) with her colleagues at their booth at Geo Connect Asia 2022.

For more information, visit <https://synspective.com>.

Viscoy showcases remote visual inspection equipment

Located in Singapore, VISCOY Pte Ltd is a specialist supplier of remote visual inspection (RVI) equipment and solutions since 2014. In asset maintenance and repair, visual inspection is often the most fundamental and important data point for deciding the course of action. Getting visuals of the area of concerns can help an inspector decide whether to invest resources for a more detailed testing/inspection of a potential defect, a remedy for a defect or a replacement of a defective part.

To meet the diverse inspection needs of its customers, VISCOY curates and offers an extensive range of RVI inspection equipment for its customers to choose from. These include standard portable systems, ground-based robotics, UAV platforms and more.

"We offer various inspection solutions using camera systems that come in different forms for different applications. Our team of engineers are also able to design and customize specific systems for especially unique applications," said Marie Kwok, Sales Manager, VISCOY Pte Ltd.

Examples of industries that RVI equipment have provided solutions for include automotive, aviation and aerospace, oil & gas, petrochemicals, pharmaceutical, marine, power generation, urban infrastructure and public security & safety and etc.

VISCOY is not only adept at tailor-fitting equipment to produce the desired results but is also proficient at identifying and prescribing equipment most suited for individual applications.

For more information, visit www.viscoy.com.



Marie Kwok, Sales Manager of VISCOY Pte Ltd.

Vizzio Technologies unveils Digital Twin at Geo Connect Asia 2022, claimed to be the world's largest

VIZZIO Technologies unveiled possibly the most advanced technology at Geo Connect Asia 2022.

The Singapore-based technology company specialised in creating and virtualising digital realities, has "cloned" the entire Singapore by building a digital twin using AI, with photoreal renditions from aerial to building to street level to indoors, in a seamless interactive 3D tour. The 1:1 scale version of 3D Singapore, modelled using satellite imagery and AI and divided into 1 square metre tiles, totalling 728,000,000 tiles, was created in less than two weeks.

VIZZIO has the capability to clone Planet Earth on a global scale which is both dimensionally accurate and incredibly robust, that is ready for use by government and commercial entities. The company developed DEEP generative models to learn to synthesise realistic images from 64 global sources and can map any city in the world, without the need of sending photogrammetry drones. This is a Singapore First and a World First. Any organisation that needs the most recent, 3D and interactive model of Singapore, is invited to collaborate with VIZZIO.

VIZZIO also launched a metaverse version of Singapore and the world for leisure and gamification purposes. In time, organisations and corporations can use VIZZIO's metaverse Super App to market their brands and products, based on a 1:1 exact replica of Earth, in high resolution, built faster and more accurately, created entirely with AI and machine learning.

VIZZIO's AI-based 3D City Modelling technology called "GEO EARTH" is the brains behind a vast semantic 3D world, built entirely using satellite imagery and A.I. Essentially GEO EARTH has a canny understanding of what different buildings look like from an aerial view, even in suboptimal lighting and incomplete imagery. The machine learning system VIZZIO built has the ability to extrapolate from imperfect outlines by taking into consideration the neighbourhood (residential versus commercial), roof type (slanted versus flat), and other



Dr Jon Lee, Founder and Chief Executive Officer, VIZZIO Technologies.



VIZZIO Technologies at Geo Connect Asia 2022.

factors such as the presence of air conditioning units and more. With the aid of these data, the algorithms create a plausible 3D reconstruction of buildings and even entire cities.

VIZZIO's Geo Earth overcomes the challenge of being not just accomplishing this not once but a billion times on a regular basis, in order to create an up-to-date 3D representation of every building on planet earth.

Having this ability to update 3D models of cities regularly based on new imagery from satellites is crucial to business propositions. The 3D map data, such as those currently seen in Google and Apple's maps, is based on photogrammetry, aerial photography combining multiple aerial images and comparing parallax data (much like our eyes do) to determine size and depth. This requires huge efforts to fly drones and 3D software to touch up and optimise the city models.

VIZZIO has made it possible for 3D maps to represent areas of Singapore as recent as a week ago, not the current expectation of maps accurate as of two years ago. This level of recency was unheard of until now. VIZZIO has pioneered an innovative way to turn 2D satellite images-into 3D semantic models of buildings and cities, a game-changer for city planning, real-estate, energy and utilities, training, security, defence and simulation.

For more information, visit <https://vizzio.ai/v7>.

xD VISUALS Oy exhibits digital twin for built environment

XD VISUALS Oy is a company based in Helsinki, Finland developing digital twin and smart city software solutions for urban development. Its mission is to optimize urban development processes so that its customers can get time and cost savings and can create more sustainable, healthier and functional cities.

At Geo Connect Asia 2022, the company exhibited xD Twin which is a digital twin solution for urban development. It combines City models, 3D, CAD, BIM, GIS and Survey data into a visual and informative digital twin of existing and future. This enables urban development coordination and optimization in its entirety, including all disciplines in all life cycle phases.

Benefits include:

- Increased understanding with information visualization powered with VR (Virtual Reality) and AR (Augmented Reality)
- Increased access to information with data fusion, speed, and automatic positioning on-site
- Increased acceptance and trust with transparent collaboration and citizen participation
- Increased productivity and quality with workflow automation and data analytics
- Decreased risk, time and cost with simulation, optimization, and validation

Commenting on the key feature that sets the company's digital twin apart from others, Jarkko Sireeni, CEO and Founder, xD VISUALS Oy said: "Our digital twin software can combine the design model (BIM) with the city model and that is a very unique feature."



Jarkko Sireeni, CEO and Founder, xD VISUALS Oy.

For more information, visit <https://www.xd-twin.io>.

Maphive Technology showcases smart and simple indoor mapping for everyone



John Chan at his booth.

Maphive Technology Limited showcased Mapxus at Geo Connect Asia 2022. Mapxus is an all-in-one indoor GIS platform in providing indoor mapping services for global applications. It empowers people and businesses by creating a barrier-free and inclusive city experience for everyone.

Previously based in Hong Kong, the company moved its headquarters to Singapore last month. As a new entrant here, the company needs some exposure and participated in Geo Connect Asia 2022.

"We offer smart and indoor mapping for everyone to create a smarter future," said Dr. John Chan, Founder & CEO, Maphive Technology Limited.

Mapxus is a vector-based indoor map. It integrates indoor map with outdoor and enables a smooth rendering and responsive user experience on all platforms – web, iOS and Android.

Mapxus is a partner of Apple Maps. It has done some work in China and Vietnam and is now expanding its business to Southeast Asia, Middle East and Singapore. It has good business in Japan and Taiwan.

For more information, visit <https://www.mapxus.com>.



Architecture & Building Services 2022

Sustainability In A Digital Built Environment



16 - 18 November 2022



Marina Bay Sands Singapore
Sands Expo & Convention Centre | Halls B & C

Southeast Asian building and construction technology exhibition and conference



BUILDING CONSTRUCTION TECHNOLOGY EXPO

21 | 22 | 23 SEPTEMBER 2022

📍 Hall 8 | IMPACT Exhibition and Convention Centre
Bangkok, Thailand



Ask for more information

+66 83 132 4995

info@bct-construction.com

Website: www.bct-construction.com

BuildingConstructionTechnology-BCT

Co - Located with :



Organizer :



Silver Sponsor



CrystalFloor

BEX ASIA

BUILT ENVIRONMENT XPO ASIA

6 - 8 SEPTEMBER 2022
SANDS EXPO & CONVENTION CENTRE

Meet and re-connect with your potential suppliers and partners in person at the region's premier market intelligence platform for the built environment.



PRODUCT CATEGORIES AVAILABLE AT BEX ASIA 2022



Advanced Materials & Sustainability



Advanced Construction Solutions



Architectural & Interior



Digitalisation



HVAC & IAQ



Mechanical, Electrical & Plumbing



Smart Facility Management



Sustainability

WHY YOU SHOULD VISIT BEX ASIA



Source the Latest Built Environment Solutions for Your Projects



Be Part of the Conversation on The Trends and Opportunities that will Facilitate Business Growth and Transformation at IBEW (International Built Environment Week) Conference



Learn From the Latest Innovations and Solutions At Our Complimentary Technical Seminars



Identify, Connect and Establish Partnerships with Thousands of Sellers and Buyers Through Our Smart Matching System



Connect with International Peers and Suppliers to Expand Your Network and Business Opportunities

Pre-register your complimentary visitor pass now to skip the queues on 6- 8 September 2022!



WWW.BEX-ASIA.COM

Organiser



Strategic Partner



An Event Of



An Initiative Under



Housed within BEX Asia



BuildSG Partners



WORLD BEX SERVICES INTERNATIONAL



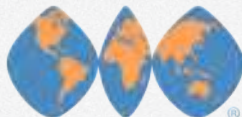
THE 25TH PHILIPPINE WORLD BUILDING AND CONSTRUCTION EXPOSITION

WORLD BEX



AUGUST 31 TO | 2022
SEPTEMBER 3

SMX
CONVENTION CENTER
MANILA



WORLD TRADE CENTER[®]
METRO MANILA



worldbex.com



inquire@worldbexevents.com



ACCELERATING TRANSFORMATION, GROWING TOGETHER

INTERNATIONAL BUILT ENVIRONMENT WEEK

5 — 9 SEPTEMBER 2022
SANDS EXPO & CONVENTION CENTRE

The International Built Environment Week (IBEW) – Asia Pacific’s most anticipated Built Environment event is back for its 4th edition as an in-person event. Gain insights from speakers and thought leaders around the globe and dive deeper into the industry-wide transformation, growing momentum, and existing opportunities that lie ahead.

CONFERENCE HIGHLIGHTS



The Power of Design in Shaping a Climate-Friendly Built Environment



Spearheading Towards a Low-Carbon Built Environment Ecosystem



Strategising & Sustaining Innovation DNA



Innovating the Future of Smart Cities



CEOs In-Conversation: Leading Together, Co-Creating Success



Leading Through Change

IBEW 2022’S SPEAKERS AND PANELLISTS



MR. MOSHE SAFDIE
Founder,
Safdie Architects



MR. PIERRE-ERIC SAINT-ANDRÉ
Chairman and Chief Executive Officer,
Bouygues Bâtiment International



MR. NICOLAS MANGON
Vice President,
AutoCAD & AEC Industry Strategy, Autodesk



MR. KELVIN WONG
Chief Executive Officer, Building and Construction Authority



ER. DR. JOHNNY WONG
Deputy Chief Executive Officer (Building),
Housing and Development Board



MR. LOUIS LIM
Chief Executive Officer,
Keppel Land



MS. YULANDA CHUNG
Head of Sustainability,
Institutional Banking Group, DBS



MR. WILLIAM RUH
Chief Executive Officer,
Digital, Lendlease

EARLY BIRD SPECIAL

Experience unparalleled discovery, learning, and networking at the IBEW 2022 Conference.

Sign up by
5 August 2022
to enjoy up to
40% discount

REGISTER NOW

WWW.IBEW.SG



The IBEW is organised by BCA International, a wholly owned subsidiary of BCA, in partnership with RX Singapore.



An Initiative Under

Co-Located Exhibition



BuildSG Partners



2022

**31 Aug -
3 Sept****WORLDBEX 2022**

World Trade Center and SMX Convention Center
Manila, Philippines
T: +63 2 8656 9239
E: inquire@worldbexevents.com
W: www.worldbex.com

2022

**5-9
Sept****International Built Environment Week (IBEW) 2022**

Sands Expo & Convention Centre
Singapore
T: +65 6780 4613
E: ibew@rxglobal.com.sg
W: www.ibew.sg

2022

**6-8
Sept****BEX Asia 2022**

Sands Expo & Convention Centre
Singapore
T: +65 6780 4594
E: info@bex-asia.com
W: www.bex-asia.com

2022

**21-23
Sept****Building Construction Technology Expo 2022**

IMPACT Exhibition and Convention Centre
Bangkok, Thailand
T: +66 2 833 5198 / +66 2 831 32 4995
E: info@bct-construction.com
W: https://bct-construction.com

2022

**2-4
Nov****ConsBuild ASIA 2022**

BITEC
Bangkok, Thailand
T: +66 94 996 8312
E: info@consbuild-asia.com
W: www.consbuild-asia.com

2022

**16-18
Nov****Architecture & Building Services 2022**

Sands Expo & Convention Centre
Marina Bay Sands Singapore (Hall B & C)
Singapore
T: +65 6278 8666
E: info@cems.com.sg
W: www.architecturebuildingservices.com.sg

2022

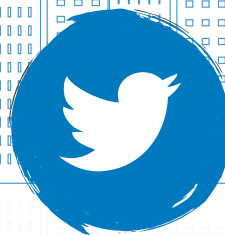
**7-8
Dec****Earthquake Expo Asia 2022**

Singapore Expo
Singapore
T: +852 5803 2879
E: arthur.chen@prysmggroup.com
W: www.theearthquakeexpoasia.com

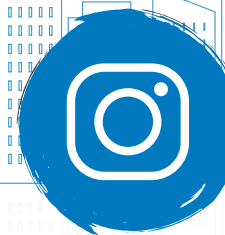
Follow us on Social Media



[www.facebook.com/
southeastasiabuilding](http://www.facebook.com/southeastasiabuilding)



[www.twitter.com/
SEA_Building](http://www.twitter.com/SEA_Building)



[www.instagram.com/
southeastasiabuilding](http://www.instagram.com/southeastasiabuilding)



dormakaba Singapore	📍 Singapore	☎ +65 6268 7633	✉ marketing.sg@dormakaba.com	🌐 www.dormakaba.com.sg	📖 OBC
Hunter Douglas	📍 Malaysia	☎ +603 5191 2020	✉ luxalon@hunterdouglas.com.my	🌐 www.hunterdouglas.com.my	📖 1
Mapei Far East	📍 Singapore	☎ +65 6862 3488	✉ mapei@mapei.com.sg	🌐 www.mapei.com.sg	📖 3

See us at following upcoming events!

Event	Date	City	Country	Website	Page
WORLDBEX 2022	31 Aug-20 Sept 2022	Manila	Philippines	www.worldbex.com	73
Int'l Built Environment Week (IBEW) 2022	5-9 Sept 2022	Singapore	Singapore	www.ibew.sg	74
BEX Asia 2022	6-8 Sept 2022	Singapore	Singapore	www.bex-asia.com	72
Building Construction Technology Expo 2022	21-23 Sept 2022	Bangkok	Thailand	https://bct-construction.com	71
ConsBuild ASIA 2022	2-4 Nov 2022	Bangkok	Thailand	www.consbuild-asia.com	IFC
Architecture & Building Services 2022	16-18 Nov 2022	Singapore	Singapore	www.architecturebuildingservices.com.sg	70
Earthquake Expo Asia 2022	7-8 Dec 2022	Singapore	Singapore	www.theearthquakeexpoasia.com	IBC

Legend: IFC (Inside Front Cover), IBC (Inside Back Cover), OBC (Outside Back Cover)



issuu.com/southeastasiabuilding



NATURAL DISASTERS EXPO

ASIA 2022

**7-8
DECEMBER
2022**

SINGAPORE EXPO,
SINGAPORE

THE WORLD'S LEADING EVENT SERIES FOR THE MANAGEMENT AND MITIGATION OF NATURAL DISASTERS

300 SUPPLIERS SHOWCASING THE MOST INNOVATIVE PRODUCTS & SERVICES

100 LIVE DEMONSTRATIONS

3,000 VISITORS

200 INDUSTRY LEADING SPEAKERS



ASIA 2022
HEAT & FIRE EXPO



ASIA 2022
STORM EXPO



ASIA 2022
FLOOD EXPO



ASIA 2022
EARTHQUAKE EXPO

REGISTER TODAY FOR YOUR FREE TICKETS

WWW.NATURALDISASTERSSHOWASIA.COM

#NDEASIA | #FLOODXPOASIA | #HEAT&FIREXPOASIA | #EARTHQUAKEEXPOASIA | #STORMEXPOASIA



Inverse Functionality

For automatic swing doors

Good news – dormakaba's new Inverse Function is now fully integrable to our automatic swing doors!

dormakaba has always been working hard in the interest of refining our fire protection technologies in order to safeguard lives and assets. In the event of a fire, our automatic swing doors, with



our innovative new Inverse Function, operate by pulling in fresh air, and redirecting smoke to provide an increased layer of fire protection.

Our ASEAN locations:

Singapore

+65 6268 7633

Malaysia/Brunei

+60 3 8081 8009

Philippines

+63 2 8893 4077

Indonesia

+62 21 2930 3762

Vietnam

+84 8 6299 8272

Thailand/Cambodia/ Myanmar/Laos

+66 2059 2612

www.dormakaba.com.sg

Info.ASEAN@dormakaba.com

 [dormakabaASEAN](#)

 [dormakaba ASEAN](#)



new technology



new technology

With our new Inverse Function, combined with our patented FRX®/FPP® technology, dormakaba brings a whole new dimension to fire safety and protection.